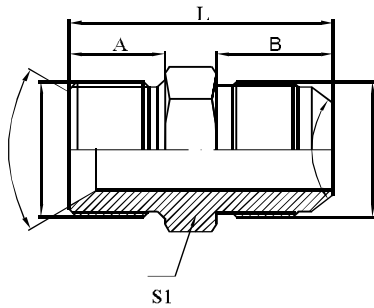


Hydraulic adapters

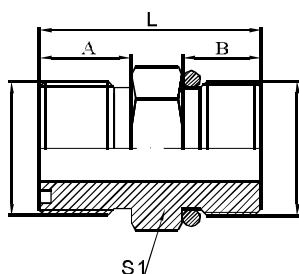


1BJ

英管外螺纹60°内锥或六角端面组
合垫密封/美制JIC外螺纹74°外锥
BSP MALE DOUBLE FOR
60°SEAT BONDED SEAL/JIC
MALE 74°CONE

代号 PART NO.	螺纹 THREADE		尺寸 DIMENSIONS						
	E	F	A	B	S1	L			
1BJ-02-04	G1/8"X28	U7/16"X20	10	14	14	30			
1BJ-02-05	G1/8"X28	U1/2"X20	10	14	14	30			
1BJ-02-06	G1/8"X28	U9/16"X18	10	14	14	30			
1BJ-04	G1/4"X19	U7/16"X20	12	14	19	32			
1BJ-04-05	G1/4"X19	U1/2"X20	12	14	19	32			
1BJ-04-06	G1/4"X19	U9/16"X18	12	14	19	32			
1BJ-04-08	G1/4"X19	U3/4"X16	12	16.7	19	37			
1BJ-04-10	G1/4"X19	U7/8"X14	12	19.5	22	39.5			
1BJ-06	G3/8"X19	U9/16"X18	13.5	14	22	35			
1BJ-06-04	G3/8"X19	U7/16"X20	13.5	14	22	35			
1BJ-06-05	G3/8"X19	U1/2"X20	13.5	14	22	35			
1BJ-06-08	G3/8"X19	U3/4"X16	13.5	16.7	22	38			
1BJ-06-10	G3/8"X19	U7/8"X14	13.5	19.5	22	41			
1BJ-06-12	G3/8"X19	U1.1/16"X12	13.5	22	30	44.5			
1BJ-08	G1/2"X14	U3/4"X16	16	16.7	27	42			
1BJ-08-04	G1/2"X14	U7/16"X20	16	14	27	40			
1BJ-08-05	G1/2"X14	U1/2"X20	16	14	27	40			
1BJ-08-06	G1/2"X14	U9/16"X18	16	14	27	40			
1BJ-08-10	G1/2"X14	U7/8"X14	16	19.5	27	45.5			
1BJ-08-12	G1/2"X14	U1.1/16"X12	16	22	30	47			
1BJ-08-16	G1/2"X14	U1.5/16"X12	16	23	36	50			
1BJ-10	G5/8"X14	U7/8"X14	17.5	19.5	30	46			
1BJ-10-08	G5/8"X14	U3/4"X16	17.5	16.7	30	43			
1BJ-10-12	G5/8"X14	U1.1/16"X12	17.5	22	30	48.5			
1BJ-10-16	G5/8"X14	U1.5/16"X12	17.5	23	36	51.5			
1BJ-12	G3/4"X14	U1.1/16"X12	18.5	22	32	50			
1BJ-12-06	G3/4"X14	U9/16"X18	18.5	14	32	42			
1BJ-12-08	G3/4"X14	U3/4"X16	18.5	16.7	32	46			
1BJ-12-10	G3/4"X14	U7/8"X14	18.5	19.5	32	49			

Hydraulic adapters



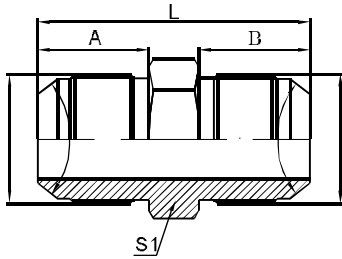
1FO

美制ORFS外螺纹O型圈平面密封/
美制外螺纹带O型圈重系列

ORFS MALE O-RING/
SAE O-RING BOSS S-SERIES

代号 PART NO.	螺纹 THREADE		尺寸 DIMENSIONS				
	E	F	A	B	S1	L	
1FO-04	U9/16"X18	U7/16"X20	12	10	17	28	
1FO-04-05	U9/16"X18	U1/2"X20	12	10	17	28	
1FO-04-06	U9/16"X18	U9/16"X18	12	12	17	30	
1FO-04-08	U9/16"X18	U3/4"X16	12	12	22	32	
1FO-06-04	U11/16"X16	U7/16"X20	14	10	19	30	
1FO-06-05	U11/16"X16	U1/2"X20	14	10	19	30	
1FO-06	U11/16"X16	U9/16"X18	14	12	19	32	
1FO-06-08	U11/16"X16	U3/4"X16	14	12	22	34	
1FO-06-10	U11/16"X16	U7/8"X14	14	13.5	27	37	
1FO-08-06	U13/16"X16	U9/16"X18	15	12	22	35	
1FO-08	U13/16"X16	U3/4"X16	15	12	22	35	
1FO-08-10	U13/16"X16	U7/8"X14	15	13.5	27	38	
1FO-08-12	U13/16"X16	U1.1/16"X12	15	16	32	40	
1FO-10	U1"X14	U7/8"X14	16.5	13.5	27	39	
1FO-10-08	U1"X14	U3/4"X16	16.5	12	27	38	
1FO-10-12	U1"X14	U1.1/16"X12	16.5	16	32	42	
1FO-12-10	U1.3/16"X12	U7/8"X14	17	13.5	32	41	
1FO-12	U1.3/16"X12	U1.1/16"X12	17	16	32	42	
1FO-12-16	U1.3/16"X12	U1.5/16"X12	17	17	41	46	
1FO-16-12	U1.7/16"X12	U1.1/16"X12	18.5	16	41	46	
1FO-16	U1.7/16"X12	U1.5/16"X12	18.5	17	41	47	
1FO-16-20	U1.7/16"X12	U1.5/8"X12	18.5	18	50	53	
1FO-20-16	U1.11/16"X12	U1.5/16"X12	19.5	17	46	50	
1FO-20	U1.11/16"X12	U1.5/8"X12	19.5	18	50	54	

Hydraulic adapters

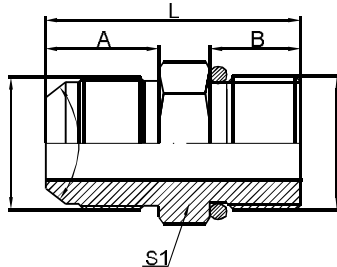


1J

美制JIC外螺纹74°外锥
JIC MALE 74° CONE

代号 PART NO.	螺纹 THREADS		尺寸 DIMENSIONS				
	E	F	A	B	S1	L	
1J-02	U5/16"X24	U5/16"X24	11.5	11.5	12	29	
1J-04	U7/16"X20	U7/16"X20	14	14	14	34	
1J-04-05	U7/16"X20	U1/2"X20	14	14	14	34	
1J-04-06	U7/16"X20	U9/16"X18	14	14	17	34	
1J-04-08	U7/16"X20	U3/4"X16	14	16.7	22	39	
1J-05	U1/2"X20	U1/2"X20	14	14	14	34	
1J-05-06	U1/2"X20	U9/16"X18	14	14	17	35	
1J-05-08	U1/2"X20	U3/4"X16	14	16.7	22	39	
1J-05-10	U1/2"X20	U7/8"X14	14	19.5	24	42	
1J-06	U9/16"X18	U9/16"X18	14	14	17	35.5	
1J-06-08	U9/16"X18	U3/4"X16	14	16.7	22	38	
1J-06-10	U9/16"X18	U7/8"X14	14	19.5	24	42	
1J-06-12	U9/16"X18	U1.1/16"X12	14	22	30	46	
1J-08	U3/4"X16	U3/4"X16	16.7	16.7	22	42	
1J-08-10	U3/4"X16	U7/8"X14	16.7	19.5	24	44	
1J-08-12	U3/4"X16	U1.1/16"X12	16.7	22	30	49	
1J-08-16	U3/4"X16	U1.5/16"X12	16.7	23	36	51	
1J-10	U7/8"X14	U7/8"X14	19.5	19.5	24	47.5	
1J-10-12	U7/8"X14	U1.1/16"X12	19.5	22	30	52	
1J-10-16	U7/8"X14	U1.5/16"X12	19.5	23	36	53.5	
1J-12	U1.1/16"X12	U1.1/16"X12	22	22	30	55	
1J-12-16	U1.1/16"X12	U1.5/16"X12	22	23	36	56	
1J-16	U1.5/16"X12	U1.5/16"X12	23	23	36	57	
1J-16-20	U1.5/16"X12	U1.5/8"X12	23	24.5	46	60	
1J-20	U1.5/8"X12	U1.5/8"X12	24.5	24.5	46	61.5	
1J-20-24	U1.5/8"X12	U1.7/8"X12	24.5	27.5	50	66.5	
1J-20-32	U1.5/8"X12	U2.1/2"X12	24.5	34	70	75.5	
1J-24	U1.7/8"X12	U1.7/8"X12	27.5	27.5	50	69.5	
1J-24-32	U1.7/8"X12	U2.1/2"X12	27.5	34	70	78.5	
1J-32	U2.1/2"X12	U2.1/2"X12	34	34	70	85	

Hydraulic adapters

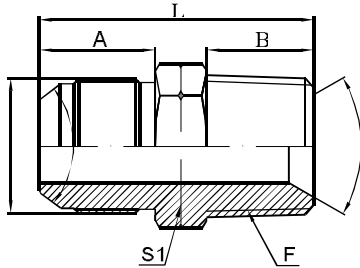


1JH

JIC外螺纹74°外锥/
公制外螺纹O型圈密封
JIC MALE 74° CONE/
METRIC MALE END O-RING

代号 PART NO.	螺纹 THREADS		尺寸 DIMENSIONS				
	E	F	A	B	S1	L	
1JH-04-10	U7/16"X20	M10x1	14	11	14	31	
1JH-04-12	U7/16"X20	M12x1.5	14	11	17	31	
1JH-04-14	U7/16"X20	M14x1.5	14	11	19	32	
1JH-05-10	U1/2"X20	M10x1	14	11	14	31	
1JH-05-12	U1/2"X20	M12x1.5	14	11	17	31	
1JH-05-14	U1/2"X20	M14x1.5	14	11	19	31	
1JH-06-14	U9/16"X18	M14x1.5	14	11	19	32	
1JH-06-16	U9/16"X18	M16x1.5	14	11	22	33	
1JH-06-18	U9/16"X18	M18x1.5	14	11	24	33	
1JH-08-14	U3/4"X16	M14x1.5	16.7	11	22	36	
1JH-08-16	U3/4"X16	M16x1.5	16.7	11	22	36	
1JH-08-18	U3/4"X16	M18x1.5	16.7	11	24	36	
1JH-08-22	U3/4"X16	M22x1.5	16.7	12	27	37	
1JH-10-16	U7/8"X14	M16x1.5	13.5	11	24	33	
1JH-10-18	U7/8"X14	M18x1.5	13.5	11	24	33	
1JH-10-22	U7/8"X14	M22x1.5	13.5	12	27	33	
1JH-12-22	U1.1/16"X12	M22x1.5	16	12	30	38	
1JH-12-27	U1.1/16"X12	M27x2	16	13	32	39	
1JH-16-27	U1.5/16"X12	M27x2	16	13	36	40	

Hydraulic adapters

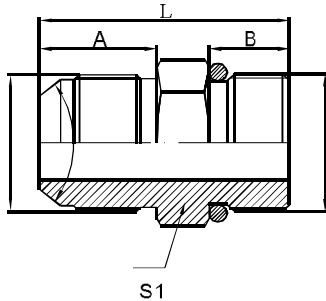


1JN

JIC外螺纹74°外锥/布锥管外螺纹
JIC MALE 74° CONE/NPT MALE

代号 PART NO.	螺纹 THREADE		尺寸 DIMENSIONS				
	E	F	A	B	S1	L	
1JN-04-02	U7/16"X20	Z1/8"X27	14	10	14	30	
1JN-04	U7/16"X20	Z1/4"X18	14	14	14	34	
1JN-04-06	U7/16"X20	Z3/8"X18	14	14	19	34	
1JN-04-08	U7/16"X20	Z1/2"X14	14	19	22	41.5	
1JN-05-04	U1/2"X20	Z1/4"X18	14	14	14	34	
1JN-05-06	U1/2"X20	Z3/8"X18	14	14	19	34	
1JN-05-08	U1/2"X20	Z1/2"X14	14	19	22	41.5	
1JN-06-04	U9/16"X18	Z1/4"X18	14	14	17	34	
1JN-06	U9/16"X18	Z3/8"X18	14	14	19	34	
1JN-06-08	U9/16"X18	Z1/2"X14	14	19	22	41	
1JN-08-04	U3/4"X16	Z1/4"X18	16.7	14	22	39	
1JN-08-06	U3/4"X16	Z3/8"X18	16.7	14	22	38	
1JN-08	U3/4"X16	Z1/2"X14	16.7	19	22	44	
1JN-08-12	U3/4"X16	Z3/4"X14	16.7	19.5	30	46	
1JN-10-06	U7/8"X14	Z3/8"X18	19.5	14	24	42	
1JN-10-08	U7/8"X14	Z1/2"X14	19.5	19	24	47	
1JN-10-12	U7/8"X14	Z3/4"X14	19.5	19.5	30	48	
1JN-12-08	U1.1/16"X12	Z1/2"X14	22	19	30	50	
1JN-12	U1.1/16"X12	Z3/4"X14	22	19.5	30	50	
1JN-12-16	U1.1/16"X12	Z1"X11.5	22	24	36	57	
1JN-12-20	U1.1/16"X12	Z1.1/4"X11.5	22	25	46	60	
1JN-16-12	U1.5/16"X12	Z3/4"X14	23	19.5	36	53	
1JN-16	U1.5/16"X12	Z1"X11.5	23	24	36	58	
1JN-16-20	U1.5/16"X12	Z1.1/4"X11.5	23	25	46	61	
1JN-16-24	U1.5/16"X12	Z1.1/2"X11.5	23	25	50	64	
1JN-20-16	U1.5/8"X12	Z1"X11.5	24.5	24	46	62	
1JN-20	U1.5/8"X12	Z1.1/4"X11.5	24.5	25	46	63	
1JN-24	U1.7/8"X12	Z1.1/2"X11.5	27.5	25	50	69	
1JN-24-32	U1.7/8"X12	Z2"X11.5	27.5	29	70	74	
1JN-32	U2.1/2"X12	Z2"X11.5	34	29	70	81	

Hydraulic adapters

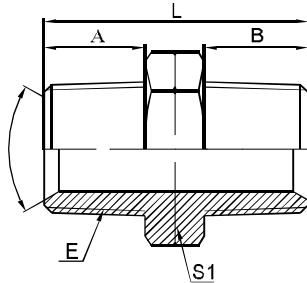


1JO

美制JIC外螺纹74°外锥/
SAE外螺纹带O型圈
JIC MALE
74°CONE/ SAE O-
RING BOSS

代号 PART NO.	螺纹 THREADE		尺寸 DIMENSIONS						
	E	F	A	B	S1	L			
1JO-04	U7/16"X20	U7/16"X20	14	10	14	31			
1JO-04-05	U7/16"X20	U1/2"X20	14	10	17	30			
1JO-04-06	U7/16"X20	U9/16"X18	14	12	17	32			
1JO-04-08	U7/16"X20	U3/4"X16	14	12	24	35			
1JO-05	U1/2"X20	U1/2"X20	14	10	17	30			
1JO-05-04	U1/2"X20	U7/16"X20	14	10	14	30			
1JO-05-06	U1/2"X20	U9/16"X18	14	12	17	32			
1JO-05-08	U1/2"X20	U3/4"X16	14	12	24	35			
1JO-06	U9/16"X18	U9/16"X18	14	12	17	33			
1JO-06-04	U9/16"X18	U7/16"X20	14	10	17	31			
1JO-06-05	U9/16"X18	U1/2"X20	14	10	17	30			
1JO-06-08	U9/16"X18	U3/4"X16	14	12	24	35			
1JO-06-10	U9/16"X18	U7/8"X14	14	13.5	27	36			
1JO-06-12	U9/16"X18	U1.1/16"X12	14	16	32	39			
1JO-08	U3/4"X16	U3/4"X16	16.7	12	24	37			
1JO-08-04	U3/4"X16	U7/16"X20	16.7	10	22	35			
1JO-08-06	U3/4"X16	U9/16"X18	16.7	12	22	37			
1JO-08-10	U3/4"X16	U7/8"X14	16.7	13.5	27	39			
1JO-08-12	U3/4"X16	U1.1/16"X12	16.7	16	32	42			
1JO-10	U7/8"X14	U7/8"X14	19.5	13.5	27	41.5			
1JO-10-08	U7/8"X14	U3/4"X16	19.5	12	24	40			
1JO-10-12	U7/8"X14	U1.1/16"X12	19.5	16	32	45			
1JO-12	U1.1/16"X12	U1.1/16"X12	22	16	32	47			
1JO-12-08	U1.1/16"X12	U3/4"X16	22	12	30	43			
1JO-12-10	U1.1/16"X12	U7/8"X14	22	13.5	30	45			
1JO-12-16	U1.1/16"X12	U1.5/16"X12	22	17	41	50			
1JO-16	U1.5/16"X12	U1.5/16"X12	23	17	41	51			
1JO-16-12	U1.5/16"X12	U1.1/16"X12	23	16	36	50			
1JO-16-20	U1.5/16"X12	U1.5/8"X12	23	18	50	55			
1JO-20	U1.5/8"X12	U1.5/8"X12	24.5	18	50	56			

Hydraulic adapters

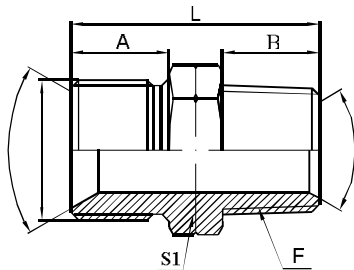


1N

美制布锥管外螺纹
NPT MALE

代号 PART NO.	螺纹 THREADS		尺寸 DIMENSIONS				
	E	F	A	B	S1	L	
1N-02	Z1/8"X27	Z1/8"X27	10	10	12	26	
1N-02-04	Z1/8"X27	Z1/4"X18	10	14	14	30	
1N-02-06	Z1/8"X27	Z3/8"X18	10	14	17	30	
1N-04	Z1/4"X18	Z1/4"X18	14	14	14	34	
1N-04-06	Z1/4"X18	Z3/8"X18	14	14	17	34	
1N-04-08	Z1/4"X18	Z1/2"X14	14	19	22	41.5	
1N-06	Z3/8"X18	Z3/8"X18	14	14	17	34	
1N-06-08	Z3/8"X18	Z1/2"X14	14	19	22	41	
1N-08	Z1/2"X14	Z1/2"X14	19	19	22	46	
1N-08-12	Z1/2"X14	Z3/4"X14	19	19.5	27	47	
1N-12	Z3/4"X14	Z3/4"X14	19.5	19.5	27	48	
1N-12-16	Z3/4"X14	Z1"X11.5	19.5	24	36	53	
1N-16	Z1"X11.5	Z1"X11.5	24	24	36	58	
1N-16-20	Z1"X11.5	Z1.1/4"X11.5	24	25	46	62	
1N-20	Z1.1/4"X11.5	Z1.1/4"X11.5	25	25	46	63	
1N-20-24	Z1.1/4"X11.5	Z1.1/2"X11.5	25	25	50	65	
1N-24	Z1.1/2"X11.5	Z1.1/2"X11.5	25	25	50	65	
1N-24-32	Z1.1/2"X11.5	Z2"X11.5	25	29	70	72	
1N-32	Z2"X11.5	Z2"X11.5	29	29	70	75	

Hydraulic adapters

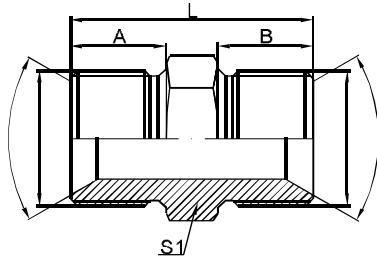


1BN

英管外螺纹60°内锥六角或端面
组合垫密封/布锥管外螺纹
BSP MALE DOUBLE FOR
60°SEAT BONDED
SEAL/NPT MALE

代号 PART NO.	螺纹 THREADE		尺寸 DIMENSIONS				
	E	F	A	B	S1	L	
1BN-02	G1/8"X28	Z1/8"X27	10	10	14	26	
1BN-02-04	G1/8"X28	Z1/4"X18	10	14	14	30	
1BN-04	G1/4"X19	Z1/4"X18	12	14	19	32	
1BN-04-02	G1/4"X19	Z1/8"X27	12	10	19	28	
1BN-04-06	G1/4"X19	Z3/8"X18	12	14	19	32	
1BN-06	G3/8"X19	Z3/8"X18	13.5	14	22	35	
1BN-06-04	G3/8"X19	Z1/4"X18	13.5	14	22	35	
1BN-06-08	G3/8"X19	Z1/2"X14	13.5	19	22	41	
1BN-08	G1/2"X14	Z1/2"X14	16	19	27	45	
1BN-08-06	G1/2"X14	Z3/8"X18	16	14	27	40	
1BN-08-12	G1/2"X14	Z3/4"X14	16	19.5	27	45	
1BN-10-08	G5/8"X14	Z1/2"X14	17.5	19	30	45	
1BN-10-12	G5/8"X14	Z3/4"X14	17.5	19.5	30	47	
1BN-12	G3/4"X14	Z3/4"X14	18.5	19.5	32	48	
1BN-12-08	G3/4"X14	Z1/2"X14	18.5	19	32	47	
1BN-12-16	G3/4"X14	Z1"X11.5	18.5	24	36	53	
1BN-16	G1"X11	Z1"X11.5	20.5	24	41	58	
1BN-16-12	G1"X11	Z3/4"X14	20.5	19.5	41	53	
1BN-16-20	G1"X11	Z1.1/4"X11.5	20.5	25	46	59	
1BN-20	G1.1/4"X11	Z1.1/4"X11.5	20.5	25	50	62	
1BN-20-16	G1.1/4"X11	Z1"X11.5	20.5	24	50	61	
1BN-20-24	G1.1/4"X11	Z1.1/2"X11.5	20.5	25	50	62	
1BN-24	G1.1/2"X11	Z1.1/2"X11.5	23	25	55	65	
1BN-24-20	G1.1/2"X11	Z1.1/4"X11.5	23	25	55	65	
1BN-24-32	G1.1/2"X11	Z2"X11.5	23	29	65	69	
1BN-32	G2"X11	Z2"X11.5	25.5	29	70	72	
1BN-32-24	G2"X11	Z1.1/2"X11.5	25.5	25	70	68	

Hydraulic adapters

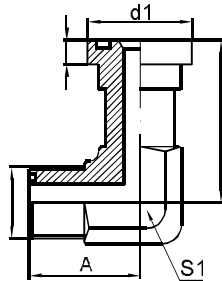


1B

英管外螺纹60°内锥
或六角端面组合垫密封
BSP MALE DOUBLE FOR
60°SEAT BONDED SEAL

代号 PART NO.	螺纹 THREADE		尺寸 DIMENSIONS						
	E	F	A	B	S1			L	
1B-02	G1/8"X28	G1/8"X28	10	10	14			26	
1B-02-04	G1/8"X28	G1/4"X19	10	12	19			28	
1B-02-06	G1/8"X28	G3/8"X19	10	13.5	22			31.5	
1B-02-08	G1/8"X28	G1/2"X14	10	16	27			34	
1B-04	G1/4"X19	G1/4"X19	12	12	19			30	
1B-04-06	G1/4"X19	G3/8"X19	12	13.5	22			33	
1B-04-08	G1/4"X19	G1/2"X14	12	16	27			36	
1B-04-10	G1/4"X19	G5/8"X14	12	17.5	30			38.5	
1B-06	G3/8"X19	G3/8"X19	13.5	13.5	22			35	
1B-06-08	G3/8"X19	G1/2"X14	13.5	16	27			37.5	
1B-06-10	G3/8"X19	G5/8"X14	13.5	17.5	30			40	
1B-06-12	G3/8"X19	G3/4"X14	13.5	18.5	32			42	
1B-08	G1/2"X14	G1/2"X14	16	16	27			40	
1B-08-10	G1/2"X14	G5/8"X14	16	17.5	30			42.5	
1B-08-12	G1/2"X14	G3/4"X14	16	18.5	32			44	
1B-10	G5/8"X14	G5/8"X14	17.5	17.5	30			44	
1B-10-12	G5/8"X14	G3/4"X14	17.5	18.5	32			46	
1B-10-16	G5/8"X14	G1"X11	17.5	20.5	41			50	
1B-12	G3/4"X14	G3/4"X14	18.5	18.5	32			47	
1B-12-16	G3/4"X14	G1"X11	18.5	20.5	41			49	
1B-12-20	G3/4"X14	G1.1/4"X11	18.5	20.5	50			56	
1B-16	G1"X11	G1"X11	20.5	20.5	41			53	
1B-16-20	G1"X11	G1.1/4"X11	20.5	20.5	50			57	
1B-16-24	G1"X11	G1.1/2"X11	20.5	23	55			60	
1B-20	G1.1/4"X11	G1.1/4"X11	20.5	20.5	50			58	
1B-20-24	G1.1/4"X11	G1.1/2"X11	20.5	23	55			61	
1B-24	G1.1/2"X11	G1.1/2"X11	23	23	55			63	
1B-24-32	G1.1/2"X11	G2"X11	23	25.5	70			66	
1B-32	G2"X11	G2"X11	25.5	25.5	70			69	

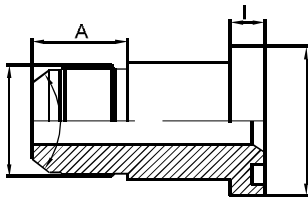
Hydraulic adapters



1FFS9

90°美制ORFS外螺纹O型圈平面
密封/重系列法兰
90°ORFS MALE O-
RING/ S-SERIES
FLANGE

代号 PART NO.	螺纹 THREADE	法兰型号 FLANGE SIZE	尺 寸 DIMENSIONS				
			l	d1	A	B	S
1FFS9-12	U1.3/16"x12	3/4"	8.9	41.3	40	54.1	27
1FFS9-16	U1.7/16"x12	1"	9.6	47.6	49	60.2	33
1FFS9-20	U1.11/16"x12	1.1/4"	10.4	54	57	66.5	44

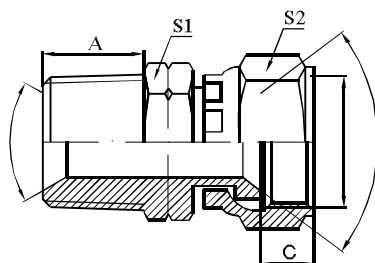


1JFL

美制JIC外螺纹74°外锥/轻系列法兰
JIC MALE 74° CONE/L-SERIES
FLANGE

代号 PART NO.	螺纹 THREADE	法兰型号 FLANGE SIZE	尺 寸 DIMENSIONS				
			l	d1	A		
1JFL-08	U3/4"X16	1/2"	7	30.2	16.7		
1JFL-08-12	U3/4"X16	3/4"	7	38.1	16.7		
1JFL-10-08	U7/8"X14	1/2"	7	30.2	19.5		
1JFL-10-12	U7/8"X14	3/4"	7	38.1	19.5		
1JFL-12-08	U1.1/16"X12	1/2"	7	30.2	22		
1JFL-12	U1.1/16"X12	3/4"	7	38.1	22		
1JFL-12-16	U1.1/16"X12	1"	8.2	44.4	22		
1JFL-16-12	U1.5/16"X12	3/4"	7	38.1	23		
1JFL-16	U1.5/16"X12	1"	8.2	44.4	23		
1JFL-16-20	U1.5/16"X12	1.1/4"	8.2	50.8	23		
1JFL-20-16	U1.5/8"X12	1"	8.2	44.4	24.5		
1JFL-20	U1.5/8"X12	1.1/4"	8.2	50.8	24.5		
1JFL-20-24	U1.5/8"X12	1.1/2"	8.2	60.3	24.5		
1JFL-24-20	U1.7/8"X12	1.1/4"	8.2	50.8	27.5		
1JFL-24	U1.7/8"X12	1.1/2"	8.2	60.3	27.5		
1JFL-24-32	U1.7/8"X12	2"	9.8	71.4	27.5		
1JFL-32	U2.1/2"X12	2"	9.8	71.4	34		

Hydraulic adapters

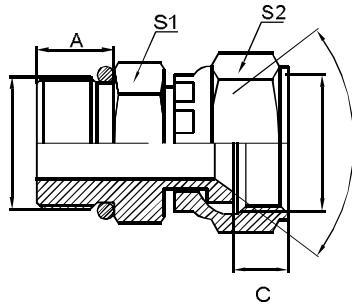


2NJ

布锥管外螺纹/JIC内螺纹74°内锥
NPT MALE/JIC FEMALE 74°SEAT

代号 PART NO.	螺纹 THREADE		尺寸 DIMENSIONS						
	E	F	A	C	S1	S2			
2NJ-02-04	Z1/8"X27	U7/16"X20	10	8.5	14	17			
2NJ-02-05	Z1/8"X27	U1/2"X20	10	9.5	14	19			
2NJ-04	Z1/4"X18	U7/16"X20	14	8.5	17	17			
2NJ-04-05	Z1/4"X18	U1/2"X20	14	9.5	17	19			
2NJ-04-06	Z1/4"X18	U9/16"X18	14	10	17	19			
2NJ-04-08	Z1/4"X18	U3/4"X16	14	11	19	24			
2NJ-06	Z3/8"X18	U9/16"X18	14	10	17	19			
2NJ-06-08	Z3/8"X18	U3/4"X16	14	11	19	24			
2NJ-06-10	Z3/8"X18	U7/8"X14	14	11	22	27			
2NJ-08	Z1/2"X14	U3/4"X16	19	11	22	24			
2NJ-08-06	Z1/2"X14	U9/16"X18	19	10	22	19			
2NJ-08-10	Z1/2"X14	U7/8"X14	19	11	22	27			
2NJ-08-12	Z1/2"X14	U1.1/16"X12	19	13.5	27	32			
2NJ-12	Z3/4"X14	U1.1/16"X12	19.5	13.5	30	32			
2NJ-12-08	Z3/4"X14	U3/4"X16	19.5	11	27	24			
2NJ-12-10	Z3/4"X14	U7/8"X14	19.5	11	27	27			
2NJ-12-16	Z3/4"X14	U1.5/16"X12	19.5	14.5	36	41			
2NJ-16	Z1"X11.5	U1.5/16"X12	24	14.5	36	41			
2NJ-16-12	Z1"X11.5	U1.1/16"X12	24	13.5	36	32			
2NJ-16-20	Z1"X11.5	U1.5/8"X12	24	15.5	46	50			
2NJ-20	Z1.1/4"X11.5	U1.5/8"X12	24	15.5	46	50			
2NJ-20-24	Z1.1/4"X11.5	U1.7/8"X12	24	18.5	46	55			
2NJ-24-20	Z1.1/2"X11.5	U1.5/8"X12	25	15.5	50	50			
2NJ-24	Z1.1/2"X11.5	U1.7/8"X12	25	18.5	50	55			

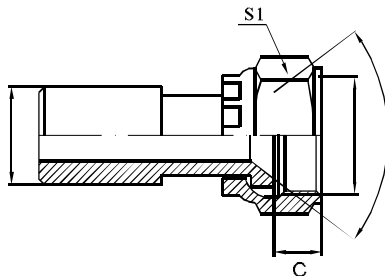
Hydraulic adapters



20J

美制SAE外螺纹带O型圈/
JIC内螺纹74°内锥
SAE O-RING BOSS/
JIC FEMALE
74°SEAT

代号 PART NO.	螺纹 THREADE		尺寸 DIMENSIONS				
	E	F	A	C	S1	S2	
20J-04	U7/16"X20	U7/16"X20	10	8.5	14	17	
20J-05	U1/2"X20	U1/2"X20	10	9.5	17	19	
20J-06	U9/16"X18	U9/16"X18	12	10	17	19	
20J-08	U3/4"X16	U3/4"X16	12	11	22	24	
20J-10	U7/8"X14	U7/8"X14	13.5	11	27	27	
20J-12	U1.1/16"X12	U1.1/16"X12	16	13.5	32	32	
20J-16	U1.5/16"X12	U1.5/16"X12	17	14.5	41	41	
20J-20	U1.5/8"X12	U1.5/8"X12	18	15.5	50	50	

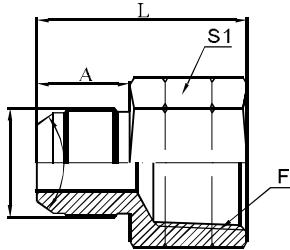


2WJ

焊接管/美制JIC内螺纹74°内锥
BUTT-WELD TUBE/JIC FEMALE
74°SEAT

代号 PART NO.	螺纹 THREADE	管子直径TUBE O.D.	尺寸 DIMENSIONS				
	E	D	C	S1			
2WJ-10-04	U7/16"X20	10	8.5	17			
2WJ-12-05	U1/2"X20	12	9.5	19			
2WJ-14-04	U7/16"X20	14	8.5	17			
2WJ-14-06	U9/16"X18	14	10	19			
2WJ-18-08	U3/4"X16	18	11	24			
2WJ-20-10	U7/8"X14	20	11	27			
2WJ-22-12	U1.1/16"X12	22	13.5	32			
2WJ-28-16	U1.5/16"X12	28	14.5	41			
2WJ-34-20	U1.5/8"X12	34	15.5	50			

Hydraulic adapters

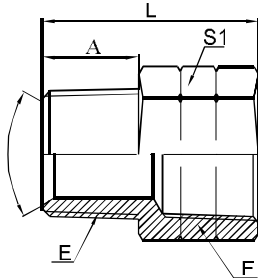


5JN

美制JIC外螺纹74°外锥/布锥管内螺纹
JIC MALE 74°CONE/NPT FEMALE

代号 PART NO.	螺纹 THREADE		尺寸 DIMENSIONS						
	E	F			A		S1		L
5JN-04-02	U7/16"X20	Z1/8"X27			14		17		29
5JN-04	U7/16"X20	Z1/4"X18			14		19		32
5JN-05-04	U1/2"X20	Z1/4"X18			14		19		32
5JN-06-04	U9/16"X18	Z1/4"X18			14		19		32
5JN-06	U9/16"X18	Z3/8"X18			14		22		34
5JN-06-08	U9/16"X18	Z1/2"X14			14		30		40
5JN-08-06	U3/4"X16	Z3/8"X18			16.7		22		37
5JN-08	U3/4"X16	Z1/2"X14			16.7		30		43
5JN-08-12	U3/4"X16	Z3/4"X14			16.7		36		47
5JN-10-08	U7/8"X14	Z1/2"X14			19.5		30		46
5JN-10-12	U7/8"X14	Z3/4"X14			19.5		36		50
5JN-12-08	U1.1/16"X12	Z1/2"X14			22		30		48
5JN-12	U1.1/16"X12	Z3/4"X14			22		36		52
5JN-16-12	U1.5/16"X12	Z3/4"X14			23		36		53
5JN-16	U1.5/16"X12	Z1"X11.5			23		41		57
5JN-20	U1.5/8"X12	Z1.1/4"X11.5			24.5		50		61
5JN-24	U1.7/8"X12	Z1.1/2"X11.5			27.5		60		65
5JN-32	U2.1/2"X12	Z2"X11.5			34		70		71

Hydraulic adapters

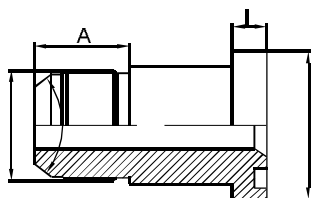


5N

美制布锥管外螺纹/布锥管内螺纹
NPT MALE/NPT FEMALE

代号 PART NO.	螺纹 THREADE		尺寸 DIMENSIONS				
	E	F	A	S1	L		
5N-02	Z1/8"X27	Z1/8"X27	10	14	25		
5N-02-04	Z1/8"X27	Z1/4"X18	10	19	28		
5N-04-02	Z1/4"X18	Z1/8"X27	14	17	20		
5N-04	Z1/4"X18	Z1/4"X18	14	19	32		
5N-04-06	Z1/4"X18	Z3/8"X18	14	22	34		
5N-06-02	Z3/8"X18	Z1/8"X28	14	19	21		
5N-06-04	Z3/8"X18	Z1/4"X18	14	19	21		
5N-06-06	Z3/8"X18	Z3/8"X18	14	24	34		
5N-06-08	Z3/8"X18	Z1/2"X14	14	30	40		
5N-08-02	Z1/2"X14	Z3/4"X14	19	24	27		
5N-08-04	Z1/2"X14	Z1/4"X18	19	24	27		
5N-08-06	Z1/2"X14	Z3/8"X18	19	24	27		
5N-08-12	Z1/2"X14	Z3/4"X14	19	36	49		
5N-12-04	Z3/4"X14	Z1/4"X18	19.5	27	29		
5N-12-06	Z3/4"X14	Z3/8"X18	19.5	27	29		
5N-12-08	Z3/4"X14	Z1/2"X14	19.5	30	29		
5N-12-16	Z3/4"X14	Z1"X11.5	19.5	41	54		
5N-12-20	Z3/4"X14	Z1.1/4"X11.5	19.5	50	56		
5N-16-06	Z1"X11.5	Z3/8"X18	24	36	34		
5N-16-08	Z1"X11.5	Z1/2"X14	24	36	34		
5N-16-12	Z1"X11.5	Z3/4"X14	24	36	34		
5N-16-16	Z1"X11.5	Z1"X11.5	24	41	58		
5N-20-12	Z1.1/4"X11.5	Z3/4"X14	25	46	38		
5N-20-16	Z1.1/4"X11.5	Z1"X11.5	25	46	38		
5N-24-16	Z1.1/2"X11.5	Z1"X11.5	25	50	42		
5N-24-20	Z1.1/2"X11.5	Z1.1/4"X11.5	25	50	42		
5N-32-16	Z2"X11.5	Z1"X11.5	29	65	47		
5N-32-20	Z2"X11.5	Z1.1/4"X11.5	29	65	47		
5N-32-24	Z2"X11.5	Z1.1/2"X11.5	29	65	47		

Hydraulic adapters

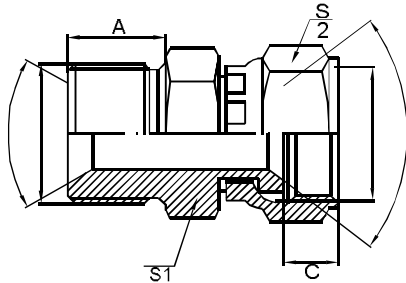


1JFS

美制JIC外螺纹74°外锥/重系列法兰
JIC MALE 74° CONE/S-SERIES
FLANGE

代号 PART NO.	螺纹 THREADE	法兰型号 FLANGE SIZE	尺 寸 DIMENSIONS				
			l	d1	A		
1JFS-08	U3/4"X16	1/2"	7.9	31.7	16.7		
1JFS-10-08	U7/8"X14	1/2"	7.9	31.7	19.5		
1JFS-10-12	U7/8"X14	3/4"	8.9	41.3	22		
1JFS-12	U1.1/16"X12	3/4"	8.9	41.3	22		
1JFS-12-16	U1.1/16"X12	1"	8.9	41.3	22		
1JFS-16	U1.5/16"X12	1"	9.6	47.6	23		
1JFS-16-12	U1.5/16"X12	3/4"	9.6	47.6	23		
1JFS-16-20	U1.5/16"X12	1.1/4"	9.6	47.6	23		
1JFS-20	U1.5/8"X12	1.1/4"	10.4	54	24.5		
1JFS-20-16	U1.5/8"X12	1"	10.4	54	24.5		
1JFS-20-24	U1.5/8"X12	1.1/2"	10.4	54	24.5		
1JFS-24-20	U1.7/8"X12	1.1/4"	12.7	63.5	27.5		
1JFS-24	U1.7/8"X12	1.1/2"	12.7	63.5	27.5		

Hydraulic adapters

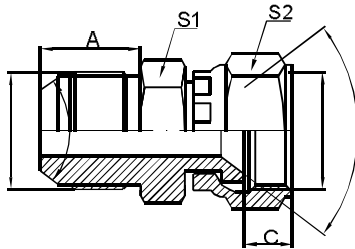


2BJ

英管外螺纹60°内锥或六角端面组
合垫密封/美制JIC内螺纹74°内锥
BSP MALE DOUBLE FOR
60°SEAT BONDED SEAL/JIC
FEMALE 74°SEAT

代号 PART NO.	螺纹 THREADS		尺寸 DIMENSIONS				
	E	F	A	C	S1	S2	
2BJ-02-04	G1/8"X28	U7/16"X20	10	8.5	14	17	
2BJ-02-06	G1/8"X28	U9/16"X18	10	10	14	19	
2BJ-04	G1/4"X19	U7/16"X20	12	8.5	19	17	
2BJ-04-05	G1/4"X19	U1/2"X20	12	9.5	19	19	
2BJ-04-06	G1/4"X19	U9/16"X18	12	10	19	19	
2BJ-04-08	G1/4"X19	U3/4"X16	12	11	19	24	
2BJ-06	G3/8"X19	U9/16"X18	13.5	10	22	19	
2BJ-06-08	G3/8"X19	U3/4"X16	13.5	11	22	24	
2BJ-06-10	G3/8"X19	U7/8"X14	13.5	11	22	27	
2BJ-08	G1/2"X14	U3/4"X16	16	11	27	24	
2BJ-08-06	G1/2"X14	U9/16"X18	16	10	27	19	
2BJ-08-10	G1/2"X14	U7/8"X14	16	11	27	27	
2BJ-10	G5/8"X14	U7/8"X14	17.5	11	30	27	
2BJ-12	G3/4"X14	U1.1/16"X12	18.5	13.5	32	32	
2BJ-12-08	G3/4"X14	U3/4"X16	18.5	11	32	24	
2BJ-12-10	G3/4"X14	U7/8"X14	18.5	11	32	27	
2BJ-12-16	G3/4"X14	U1.5/16"X12	18.5	14.5	32	41	
2BJ-16	G1"X11	U1.5/16"X12	20.5	14.5	41	41	
2BJ-16-20	G1"X11	U1.5/8"X12	20.5	15.5	41	50	
2BJ-20	G1.1/4"X11	U1.5/8"X12	20.5	15.5	50	50	
2BJ-20-24	G1.1/4"X11	U1.7/8"X12	20.5	18.5	50	55	
2BJ-24	G1.1/2"X11	U1.7/8"X12	23	18.5	55	55	
2BJ-32	G2"X11	U2.1/2"X12	25.5	24.5	70	75	

Hydraulic adapters

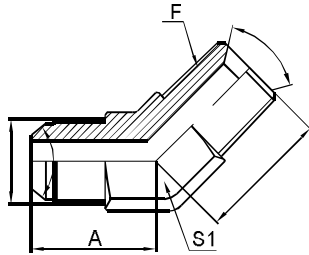


2J

美制JIC外螺纹74°外锥/
JIC内螺纹74°内锥
JIC MALE 74°CONE/
JIC FEMALE 74°SEAT

代号 PART NO.	螺纹 THREADE		尺 寸 DIMENSIONS				
	E	F	A	C	S1	S2	
2J-04	U7/16"X20	U7/16"X20		14	8.5	14	17
2J-04-05	U7/16"X20	U1/2"X20		14	9.5	14	19
2J-04-06	U7/16"X20	U9/16"X18		14	10	17	19
2J-04-08	U7/16"X20	U3/4"X16		14	11	22	24
2J-05	U1/2"X20	U1/2"X20		14	9.5	14	19
2J-05-06	U1/2"X20	U9/16"X18		14	10	17	19
2J-05-08	U1/2"X20	U3/4"X16		14	11	22	24
2J-06	U9/16"X18	U9/16"X18		14	10	17	19
2J-06-08	U9/16"X18	U3/4"X16		14	11	22	24
2J-06-10	U9/16"X18	U7/8"X14		14	11	22	27
2J-08	U3/4"X16	U3/4"X16		16.7	11	22	24
2J-08-10	U3/4"X16	U7/8"X14		16.7	11	22	27
2J-08-12	U3/4"X16	U1.1/16"X12		16.7	13.5	30	32
2J-10	U7/8"X14	U7/8"X14		19.5	11	22	27
2J-10-08	U7/8"X14	U3/4"X16		19.5	11	22	24
2J-10-12	U7/8"X14	U1.1/16"X12		19.5	13.5	30	32
2J-12	U1.1/16"X12	U1.1/16"X12		22	13.5	30	32
2J-12-10	U1.1/16"X12	U7/8"X14		22	11	30	27
2J-12-16	U1.1/16"X12	U1.5/16"X12		22	14.5	36	41
2J-16	U1.5/16"X12	U1.5/16"X12		23	14.5	36	41
2J-16-20	U1.5/16"X12	U1.5/8"X12		23	15.5	41	50
2J-20	U1.5/8"X12	U1.5/8"X12		24.5	15.5	46	50
2J-20-24	U1.5/8"X12	U1.7/8"X12		24.5	18.5	46	55
2J-24	U1.7/8"X12	U1.7/8"X12		27.5	18.5	50	55
2J-24-32	U1.7/8"X12	U2.1/2"X12		27.5	24.5	65	75
2J-32	U2.1/2"X12	U2.1/2"X12		34	24.5	65	75

Hydraulic adapters

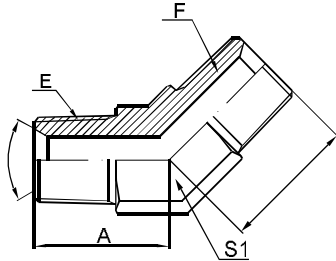


1JN4

45°JIC外螺纹74°外锥/布锥管外螺纹
45°JIC MALE 74°CONE/NPT MALE

代号 PART NO.	螺纹 THREADE		尺 寸 DIMENSIONS					
	E	F	A	B	S1			
1JN4-04-02	U7/16"X20	Z1/8"X27		20	20	11		
1JN4-04	U7/16"X20	Z1/4"X18		22	22	14		
1JN4-04-06	U7/16"X20	Z3/8"X18		22	22	17		
1JN4-04-08	U7/16"X20	Z1/2"X14		27	27	22		
1JN4-05-04	U1/2"X20	Z1/4"X18		22	22	14		
1JN4-06-04	U9/16"X18	Z1/4"X18		22	22	14		
1JN4-06	U9/16"X18	Z3/8"X18		22	22	17		
1JN4-06-08	U9/16"X18	Z1/2"X14		27	27	22		
1JN4-08-04	U3/4"X16	Z1/4"X18		25	25	19		
1JN4-08-06	U3/4"X16	Z3/8"X18		25	25	19		
1JN4-08	U3/4"X16	Z1/2"X14		27	27	22		
1JN4-08-12	U3/4"X16	Z3/4"X14		33	33	27		
1JN4-10-08	U7/8"X14	Z1/2"X14		27	27	22		
1JN4-10-12	U7/8"X14	Z3/4"X14		33	33	27		
1JN4-12-08	U1.1/16"X12	Z1/2"X14		33	33	27		
1JN4-12	U1.1/16"X12	Z3/4"X14		33	33	27		
1JN4-12-16	U1.1/16"X12	Z1"X11.5		37	37	33		
1JN4-16-12	U1.5/16"X12	Z3/4"X14		37	37	33		
1JN4-16	U1.5/16"X12	Z1"X11.5		37	37	33		
1JN4-16-20	U1.5/16"X12	Z1.1/4"X11.5		40	40	44		
1JN4-20-16	U1.5/8"X12	Z1"X11.5		40	40	44		
1JN4-20	U1.5/8"X12	Z1.1/4"X11.5		40	40	44		
1JN4-20-24	U1.7/8"X12	Z1.1/2"X11.5		47	47	53		
1JN4-24	U1.7/8"X12	Z1.1/2"X11.5		47	47	53		
1JN4-32	U2.1/2"X12	Z2"X11.5		55	55	65		

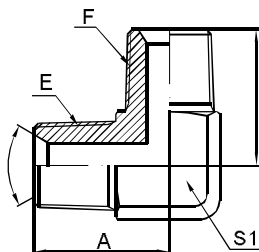
Hydraulic adapters



1N4

45°美制布锥管外螺纹
45°NPT MALE

代号 PART NO.	螺纹 THREADE		尺寸 DIMENSIONS				
	E	F	A	B	S1		
1N4-02	Z1/8"X27	Z1/8"X27	19	21	11		
1N4-04	Z1/4"X18	Z1/4"X18	22	27	14		
1N4-06	Z3/8"X18	Z3/8"X18	22	29	17		
1N4-08	Z1/2"X14	Z1/2"X14	27	37	22		
1N4-12	Z3/4"X14	Z3/4"X14	33	43	27		
1N4-16	Z1"X11.5	Z1"X11.5	37	47	33		
1N4-20	Z1.1/4"X11.5	Z1.1/4"X11.5	40	56	44		
1N4-24	Z1.1/2"X11.5	Z1.1/2"X11.5	47	57	53		
1N4-32	Z2"X11.5	Z2"X11.5	55	63	65		

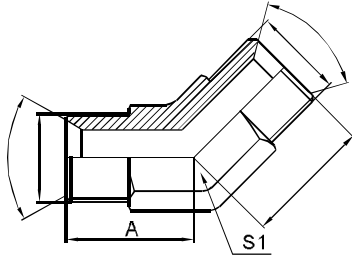


1N9

90°美制布锥管外螺纹
90°NPT MALE

代号 PART NO.	螺纹 THREADE		尺寸 DIMENSIONS				
	E	F	A	B	S1		
1N9-02	Z1/8"X27	Z1/8"X27	22	22	11		
1N9-04	Z1/4"X18	Z1/4"X18	29	27	14		
1N9-06	Z3/8"X18	Z3/8"X18	30	29	17		
1N9-08	Z1/2"X14	Z1/2"X14	37	37	22		
1N9-12	Z3/4"X14	Z3/4"X14	40	40	27		
1N9-16	Z1"X11.5	Z1"X11.5	49	49	33		
1N9-20	Z1.1/4"X11.5	Z1.1/4"X11.5	57	57	44		
1N9-24	Z1.1/2"X11.5	Z1.1/2"X11.5	57	57	48		
1N9-32	Z2"X11.5	Z2"X11.5	66	66	65		

Hydraulic adapters

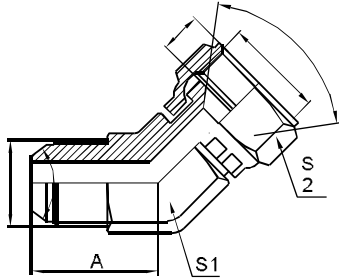


1B4

45°英管外螺纹60°内锥
45°BSP MALE 60°SEAT

代号 PART NO.	螺纹 THREADE		尺寸 DIMENSIONS						
	E	F			A	B	S1		
1B4-02-04	G1/8"X28	G1/4"X19			22	22	14		
1B4-04	G1/4"X19	G1/4"X19			22	22	14		
1B4-04-06	G1/4"X19	G3/8"X19			22	22	17		
1B4-06	G3/8"X19	G3/8"X19			22	22	17		
1B4-06-08	G3/8"X19	G1/2"X14			27	27	22		
1B4-08	G1/2"X14	G1/2"X14			27	27	22		
1B4-08-12	G1/2"X14	G3/4"X14			33	33	27		
1B4-10	G5/8"X14	G5/8"X14			27	27	22		
1B4-10-12	G5/8"X14	G3/4"X14			33	33	27		
1B4-12	G3/4"X14	G3/4"X14			33	33	27		
1B4-12-16	G3/4"X14	G1"X11			37	37	33		
1B4-16	G1"X11	G1"X11			37	37	33		
1B4-16-20	G1"X11	G1.1/4"X11			40	40	44		
1B4-20	G1.1/4"X11	G1.1/4"X11			40	40	44		
1B4-20-24	G1.1/4"X11	G1.1/2"X11			47	47	53		
1B4-24	G1.1/2"X11	G1.1/2"X11			47	47	53		
1B4-32	G2"X11	G2"X11			55	55	65		

Hydraulic adapters

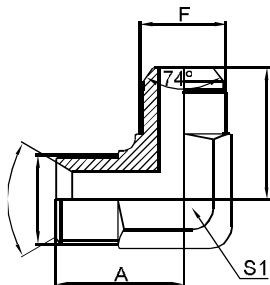


2J4

45°美制JIC外螺纹74°外锥/
 JIC内螺纹74°内锥
 45°JIC MALE 74°CONE/
 JIC FEMALE 74°SEAT

代号 PART NO.	螺纹 THREADE		尺 寸 DIMENSIONS				
	E	F	A	C	S1	S2	
2J4-04	U7/16"X20	U7/16"X20	20	8.5	11	17	
2J4-05	U1/2"X20	U1/2"X20	22	9.5	14	19	
2J4-06	U9/16"X18	U9/16"X18	22	10	14	19	
2J4-08	U3/4"X16	U3/4"X16	25	11	19	24	
2J4-10	U7/8"X14	U7/8"X14	27	11	22	27	
2J4-12	U1.1/16"X12	U1.1/16"X12	33	13.5	27	32	
2J4-16	U1.5/16"X12	U1.5/16"X12	37	14.5	33	41	
2J4-20	U1.5/8"X12	U1.5/8"X12	40	15.5	44	50	
2J4-24	U1.7/8"X12	U1.7/8"X12	47	18.5	53	55	
2J4-32	U2.1/2"X12	U2.1/2"X12	55	24.5	65	75	

Hydraulic adapters

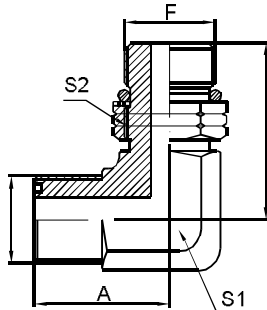


1BJ9

90°英管外螺纹60°内锥/
美制JIC外螺纹74°外锥
90°BSP MALE 60°SEAT/
JIC MALE 74°CONE

代号 PART NO.	螺纹 THREADS		尺寸 DIMENSIONS				
	E	F	A	B	S1		
1BJ9-04	G1/4"X19	U7/16"X20	27	29	14		
1BJ9-04-05	G1/4"X19	U1/2"X20	27	29	14		
1BJ9-04-06	G1/4"X19	U9/16"X18	27	29	14		
1BJ9-06	G3/8"X19	U9/16"X18	29	30	17		
1BJ9-06-08	G3/8"X19	U3/4"X16	33	33	19		
1BJ9-08	G1/2"X14	U3/4"X16	37	37	22		
1BJ9-08-10	G1/2"X14	U7/8"X14	37	37	22		
1BJ9-10	G5/8"X14	U7/8"X14	40	40	27		
1BJ9-12	G3/4"X14	U1.1/16"X12	40	40	27		
1BJ9-16	G1"X11	U1.5/16"X12	49	49	33		
1BJ9-16-20	G1"X11	U1.5/8"X12	57	57	44		
1BJ9-20	G1.1/4"X11	U1.5/8"X12	57	57	44		
1BJ9-24	G1.1/2"X11	U1.7/8"X12	57	57	48		
1BJ9-32	G2"X11	U2.1/2"X12	66	66	65		

Hydraulic adapters

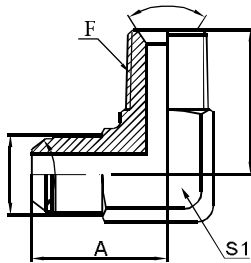


1FO9-OG

90°美制ORFS外螺纹O型圈平面密封/
美制SAE外螺纹带O型圈
90°ORFS MALE O-
RING/ SAE O-RING
BOSS

代号 PART NO.	螺纹 THREADS		尺寸 DIMENSIONS				
	E	F	A	B	S1	S2	
1FO9-04OG	U9/16"X18	U7/16"X20	29	30.3	14	17	
1FO9-04-06OG	U9/16"X18	U9/16"X18	29	32	14	19	
1FO9-06-04OG	U11/16"X16	U7/16"X20	33	33.5	19	17	
1FO9-06OG	U11/16"X16	U9/16"X18	33	34.5	19	19	
1FO9-06-08OG	U11/16"X16	U3/4"X16	33	38	19	24	
1FO9-06-10OG	U11/16"X16	U7/8"X14	37	47	22	27	
1FO9-08-06OG	U13/16"X16	U9/16"X18	37	37	22	19	
1FO9-08OG	U13/16"X16	U3/4"X16	37	40.5	22	24	
1FO9-08-12OG	U13/16"X16	U7/8"X14	37	45.3	22	27	
1FO9-08-18OG	U13/16"X16	U1.1/16"X12	40	52	27	32	
1FO9-10-12OG	U1"X14	U3/4"X16	40	45	27	24	
1FO9-10OG	U1"X14	U7/8"X14	40	50.8	27	27	
1FO9-10-18OG	U1"X14	U1.1/16"X12	40	52	27	32	
1FO9-12-10OG	U1.3/16"X12	U7/8"X14	40	52.8	27	27	
1FO9-12OG	U1.3/16"X12	U1.1/16"X12	40	54	27	32	
1FO9-12-18OG	U1.3/16"X12	U1.5/16"X12	45	55.5	33	41	
1FO9-16-12OG	U1.7/16"X12	U1.1/16"X12	45	59	33	32	
1FO9-16OG	U1.7/16"X12	U1.5/16"X12	45	59	33	41	
1FO9-20OG	U1.11/16"X12	U1.5/8"X12	57	60.5	44	50	
1FO9-20-24OG	U1.11/16"X12	U1.7/8"X12	57	66.5	48	55	

Hydraulic adapters

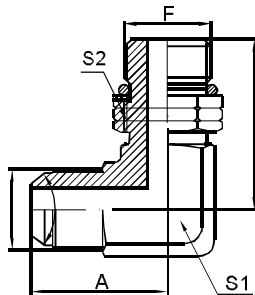


1JN9

90°JIC外螺纹74°外锥/布锥管外螺纹
90°JIC MALE 74°CONE/NPT MALE

代号 PART NO.	螺纹 THREADS		尺寸 DIMENSIONS					
	E	F	A	B	S1			
1JN9-04-02	U7/16"X20	Z1/8"X27	22	22	11			
1JN9-04	U7/16"X20	Z1/4"X18	29	27	14			
1JN9-04-06	U7/16"X20	Z3/8"X18	29	30	17			
1JN9-05-02	U1/2"X20	Z1/8"X27	29	27	14			
1JN9-05-04	U1/2"X20	Z1/4"X18	29	27	14			
1JN9-05-06	U1/2"X20	Z3/8"X18	29	30	17			
1JN9-06	U9/16"X18	Z3/8"X18	22	22	17			
1JN9-06-04	U9/16"X18	Z1/4"X18	29	27	14			
1JN9-06-08	U9/16"X18	Z1/2"X14	37	37	22			
1JN9-08-04	U3/4"X16	Z1/4"X18	33	33	19			
1JN9-08-06	U3/4"X16	Z3/8"X18	33	33	19			
1JN9-08	U3/4"X16	Z1/2"X14	37	37	22			
1JN9-08-12	U3/4"X16	Z3/4"X14	40	40	27			
1JN9-10-06	U7/8"X14	Z3/8"X18	37	37	22			
1JN9-10-08	U7/8"X14	Z1/2"X14	37	37	22			
1JN9-10-12	U7/8"X14	Z3/4"X14	40	40	27			
1JN9-12-08	U1.1/16"X12	Z1/2"X14	40	40	27			
1JN9-12	U1.1/16"X12	Z3/4"X14	40	40	27			
1JN9-12-16	U1.1/16"X12	Z1"X11.5	49	49	33			
1JN9-16-12	U1.5/16"X12	Z3/4"X14	49	49	33			
1JN9-16	U1.5/16"X12	Z1"X11.5	49	49	33			
1JN9-16-20	U1.5/16"X12	Z1.1/4"X11.5	57	57	44			
1JN9-16-24	U1.5/16"X12	Z1.1/2"X11.5	57	57	48			
1JN9-20-16	U1.5/8"X12	Z1"X11.5	57	57	44			
1JN9-20	U1.5/8"X12	Z1.1/4"X11.5	57	57	44			
1JN9-20-24	U1.7/8"X12	Z1.1/2"X11.5	57	57	48			
1JN9-24	U1.7/8"X12	Z1.1/2"X11.5	57	57	48			
1JN9-24-20	U1.7/8"X12	Z1.1/4"X11.5	57	57	48			
1JN9-32-24	U2.1/2"X12	Z1.1/2"X11.5	66	66	65			
1JN9-32	U2.1/2"X12	Z2"X11.5	66	66	65			

Hydraulic adapters

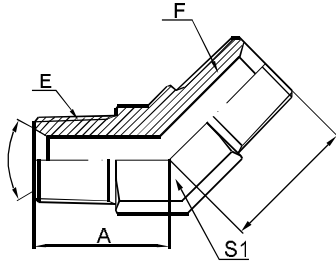


1JO9-OG

90°JIC外螺纹74°外锥/
SAE外螺纹带O型圈
90°JIC MALE 74°CONE/
SAE O-RING BOSS

代号 PART NO.	螺纹 THREADE		尺寸 DIMENSIONS				
	E	F	A	B	S1	S2	
1JO9-04OG	U7/16"X20	U7/16"X20	22	27.2	11	17	
1JO9-04-06OG	U7/16"X20	U9/16"X18	29	31.8	14	19	
1JO9-05-04OG	U1/2"X20	U7/16"X20	29	30	14	17	
1JO9-05OG	U1/2"X20	U1/2"X20	29	29	14	17	
1JO9-05-06OG	U1/2"X20	U9/16"X18	29	31.8	14	19	
1JO9-06OG	U9/16"X18	U9/16"X18	29	31.8	14	19	
1JO9-06-04OG	U9/16"X18	U7/16"X20	29	30	14	17	
1JO9-06-05OG	U9/16"X18	U1/2"X20	29	29.9	14	17	
1JO9-06-08OG	U9/16"X18	U3/4"X16	33	36.8	19	24	
1JO9-08-08OG	U3/4"X16	U7/16"X20	33	33	19	17	
1JO9-08OG	U3/4"X16	U3/4"X16	33	36.8	19	24	
1JO9-08-06OG	U3/4"X16	U9/16"X18	33	33.5	19	19	
1JO9-08-10OG	U3/4"X16	U7/8"X14	37	44	22	27	
1JO9-08-12OG	U3/4"X16	U1.1/16"X12	40	51	27	32	
1JO9-10OG	U7/8"X14	U7/8"X14	37	44	22	27	
1JO9-10-08OG	U7/8"X14	U3/4"X16	37	40	22	27	
1JO9-10-12OG	U7/8"X14	U1.1/16"X12	40	51	27	32	
1JO9-12OG	U1.1/16"X12	U1.1/16"X12	40	51	27	32	
1JO9-12-08OG	U1.1/16"X12	U7/8"X14	40	47	27	27	
1JO9-12-10OG	U1.1/16"X12	U1.5/16"X12	49	54.5	33	41	
1JO9-16OG	U1.5/16"X12	U1.5/16"X12	49	54.5	33	41	
1JO9-16-12OG	U1.5/16"X12	U1.1/16"X12	49	54.5	33	32	
1JO9-16-20OG	U1.5/16"X12	U1.5/8"X12	57	59	44	50	
1JO9-20OG	U1.5/8"X12	U1.5/8"X12	57	59	44	50	
1JO9-20-24OG	U1.5/8"X12	U1.7/8"X12	57	63	48	55	
1JO9-24OG	U1.7/8"X12	U1.7/8"X12	57	63	48	55	
1JO9-32OG	U1.7/8"X12	U2.1/2"X12	66	76	65	70	

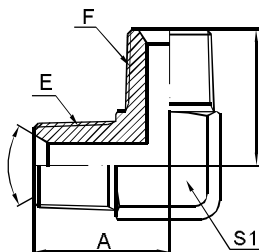
Hydraulic adapters



1N4

45°美制布锥管外螺纹
45°NPT MALE

代号 PART NO.	螺纹 THREADE		尺寸 DIMENSIONS				
	E	F	A	B	S1		
1N4-02	Z1/8"X27	Z1/8"X27	19	21	11		
1N4-04	Z1/4"X18	Z1/4"X18	22	27	14		
1N4-06	Z3/8"X18	Z3/8"X18	22	29	17		
1N4-08	Z1/2"X14	Z1/2"X14	27	37	22		
1N4-12	Z3/4"X14	Z3/4"X14	33	43	27		
1N4-16	Z1"X11.5	Z1"X11.5	37	47	33		
1N4-20	Z1.1/4"X11.5	Z1.1/4"X11.5	40	56	44		
1N4-24	Z1.1/2"X11.5	Z1.1/2"X11.5	47	57	53		
1N4-32	Z2"X11.5	Z2"X11.5	55	63	65		

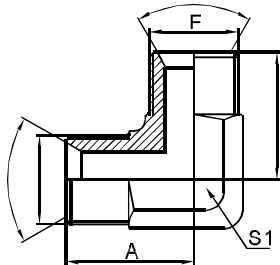


1N9

90°美制布锥管外螺纹
90°NPT MALE

代号 PART NO.	螺纹 THREADE		尺寸 DIMENSIONS				
	E	F	A	B	S1		
1N9-02	Z1/8"X27	Z1/8"X27	22	22	11		
1N9-04	Z1/4"X18	Z1/4"X18	29	27	14		
1N9-06	Z3/8"X18	Z3/8"X18	30	29	17		
1N9-08	Z1/2"X14	Z1/2"X14	37	37	22		
1N9-12	Z3/4"X14	Z3/4"X14	40	40	27		
1N9-16	Z1"X11.5	Z1"X11.5	49	49	33		
1N9-20	Z1.1/4"X11.5	Z1.1/4"X11.5	57	57	44		
1N9-24	Z1.1/2"X11.5	Z1.1/2"X11.5	57	57	48		
1N9-32	Z2"X11.5	Z2"X11.5	66	66	65		

Hydraulic adapters

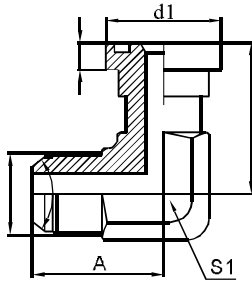


1B9

90°英管外螺纹60°内锥
90°BSP MALE 60°SEAT

代号 PART NO.	螺纹 THREADE		尺寸 DIMENSIONS					
	E	F	A	B	S1			
1B9-02-04	G1/8"X28	G1/4"X19	27	29	14			
1B9-04	G1/4"X19	G1/4"X19	29	27	14			
1B9-04-06	G1/4"X19	G3/8"X19	28	30	17			
1B9-06	G3/8"X19	G3/8"X19	30	28	17			
1B9-06-08	G3/8"X19	G1/2"X14	37	37	22			
1B9-08	G1/2"X14	G1/2"X14	37	37	22			
1B9-08-12	G1/2"X14	G3/4"X14	41	41	27			
1B9-10	G5/8"X14	G5/8"X14	37	37	22			
1B9-10-12	G5/8"X14	G3/4"X14	41	41	27			
1B9-12	G3/4"X14	G3/4"X14	41	41	27			
1B9-12-16	G3/4"X14	G1"X11	49	49	33			
1B9-16	G1"X11	G1"X11	49	49	33			
1B9-16-20	G1"X11	G1.1/4"X11	57	57	44			
1B9-20	G1.1/4"X11	G1.1/4"X11	57	57	44			
1B9-20-24	G1.1/4"X11	G1.1/2"X11	57	57	48			
1B9-24	G1.1/2"X11	G1.1/2"X11	57	57	48			
1B9-32	G2"X11	G2"X11	66	63	65			

Hydraulic adapters

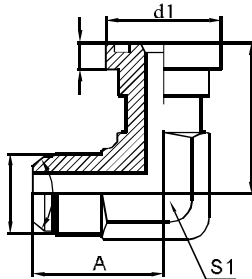


1JFL9

90°美制JIC外螺纹74°外锥/轻系列法兰
90°JIC MALE 74°CONE/L-ERIES
FLANGE

代号 PART NO.	螺纹 THREADE	法兰型号 FLANGE SIZE	尺 寸 DIMENSIONS				
			l	d1	A	B	S
1JFL9-08	U3/4"X16	1/2"	7	30.2	33	44	19
1JFL9-10-08	U7/8"X14	1/2"	7	30.2	37	44	22
1JFL9-10-12	U7/8"X14	3/4"	7	38.1	43	54.1	27
1JFL9-12	U1.1/16"X12	3/4"	7	38.1	40	40.1	27
1JFL9-12-16	U1.1/16"X12	1"	8.2	44.4	49	60.2	33
1JFL9-16	U1.5/16"X12	1"	8.2	44.4	49	60.2	33
1JFL9-16-12	U1.5/16"X12	3/4"	7	38.1	49	58	33
1JFL9-16-20	U1.5/16"X12	1.1/4"	8.2	50.8	57	66.5	44
1JFL9-20	U1.5/8"X12	1.1/4"	8.2	50.8	57	66.5	44
1JFL9-20-16	U1.5/8"X12	1"	8.2	44.4	57	65	44
1JFL9-20-24	U1.5/8"X12	1.1/2"	8.2	60.3	57	79.3	48
1JFL9-24-20	U1.7/8"X12	1.1/4"	8.2	50.8	57	75.5	48
1JFL9-24	U1.7/8"X12	1.1/2"	8.2	60.3	57	79.3	48
1JFL9-32	U2.1/2"X12	2"	9.8	71.4	66	108	65

Hydraulic adapters

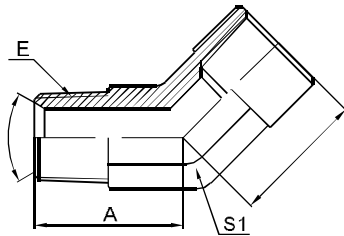


1JFS9

90°美制JIC外螺纹74°外锥/重系列法兰
90°JIC MALE 74°CONE/S-SERIES
FLANGE

代号 PART NO.	螺纹	法兰型号 FLANGE SIZE	尺 寸 DIMENSIONS				
	THREADE		l	d1	A	B	S
1JFS9-08	U3/4"X16	1/2"	7.9	31.7	33	44	19
1JFS9-10-08	U7/8"X14	1/2"	7.9	31.7	37	46	22
1JFS9-10-12	U7/8"X14	3/4"	8.9	41.3	37	54.1	22
1JFS9-12	U1.1/16"X12	3/4"	8.9	41.3	40	54.1	27
1JFS9-12-16	U1.1/16"X12	1"	8.9	41.3	49	60.2	33
1JFS9-16	U1.5/16"X12	1"	9.6	47.6	49	60.2	33
1JFS9-16-12	U1.5/16"X12	3/4"	9.6	47.6	49	57	33
1JFS9-16-20	U1.5/16"X12	1.1/4"	9.6	47.6	57	66.5	44
1JFS9-20	U1.5/8"X12	1.1/4"	10.4	54	57	66.5	44
1JFS9-20-16	U1.5/8"X12	1"	10.4	54	57	65	44
1JFS9-20-24	U1.5/8"X12	1.1/2"	10.4	54	57	79.3	44
1JFS9-24	U1.7/8"X12	1.1/2"	12.7	63.5	57	79.3	48

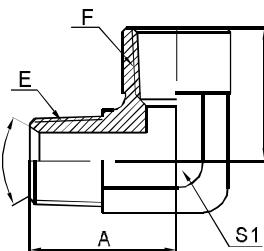
Hydraulic adapters



5N4

45°美制布锥管外螺纹/布锥管内螺纹
45°NPT MALE/NPT FEMALE

代号 PART NO.	螺纹 THREADE		尺寸 DIMENSIONS				
	E		A	B	S1		
5N4-02	Z1/8"X27		22	17	17		
5N4-04	Z1/4"X18		25	20	19		
5N4-06	Z3/8"X18		27	19	22		
5N4-08	Z1/2"X14		33	28	27		
5N4-12	Z3/4"X14		37	30	33		
5N4-16	Z1"X11.5		40	37.5	44		
5N4-20	Z1.1/4"X11.5		47	30	50		
5N4-24	Z1.1/2"X11.5		55	36	65		

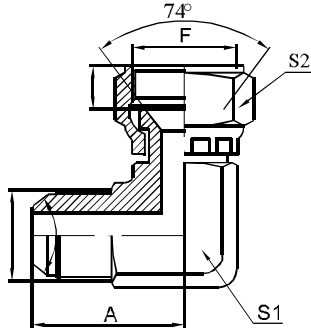


5N9

90°美制布锥管外螺纹/布锥管内螺纹
90°NPT MALE/NPT FEMALE

代号 PART NO.	螺纹 THREADE		尺寸 DIMENSIONS				
	E	F	A	B	S1		
5N9-02	Z1/8"X27	Z1/8"X27	22	17	14		
5N9-04-02	Z1/4"X18	Z1/8"X27	27	21	17		
5N9-04	Z1/4"X18	Z1/4"X18	27	21	17		
5N9-04-06	Z1/4"X18	Z3/8"X18	32	27	22		
5N9-06	Z3/8"X18	Z3/8"X18	32	27	22		
5N9-08	Z1/2"X14	Z1/2"X14	35	30	27		
5N9-12-08	Z3/4"X14	Z1/2"X14	40	32	33		
5N9-12	Z3/4"X14	Z3/4"X14	40	32	33		
5N9-16	Z1"X11.5	Z1"X11.5	49	38	41		
5N9-20	Z1.1/4"X11.5	Z1.1/4"X11.5	61	43.2	50		
5N9-24	Z1.1/2"X11.5	Z1.1/2"X11.5	65	52.8	65		
5N9-32	Z2"X11.5	Z2"X11.5	65	62	65		

Hydraulic adapters

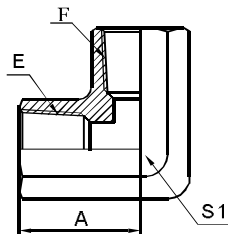


2J9

90°美制JIC外螺纹74°外锥/
JIC内螺纹74°内锥
90°JIC MALE 74°CONE/
JIC FEMALE 74°SEAT

代号 PART NO.	螺纹 THREADS		尺寸 DIMENSIONS				
	E	F	A	C	S1	S2	
2J9-04	U7/16"X20	U7/16"X20	22	8.5	11	17	
2J9-05	U1/2"X20	U1/2"X20	29	9.5	14	19	
2J9-06	U9/16"X18	U9/16"X18	29	10	14	19	
2J9-06-08	U9/16"X18	U3/4"X16	33	11	19	24	
2J9-08-06	U3/4"X16	U9/16"X18	33	10	19	19	
2J9-08	U3/4"X16	U3/4"X16	33	11	19	24	
2J9-08-10	U3/4"X16	U7/8"X14	37	11	22	27	
2J9-10	U7/8"X14	U7/8"X14	37	11	22	27	
2J9-10-08	U7/8"X14	U3/4"X16	37	11	22	24	
2J9-10-12	U7/8"X14	U1.1/16"X12	40	13.5	27	32	
2J4-12	U1.1/16"X12	U1.1/16"X12	40	13.5	27	32	
2J4-12-10	U1.1/16"X12	U7/8"X14	40	11	27	27	
2J4-12-16	U1.1/16"X12	U1.5/16"X12	49	14.5	33	41	
2J9-16	U1.5/16"X12	U1.5/16"X12	49	14.5	33	41	
2J9-16-20	U1.5/16"X12	U1.5/8"X12	57	15.5	44	50	
2J9-20-16	U1.5/8"X12	U1.5/16"X12	57	14.5	44	41	
2J9-20	U1.5/8"X12	U1.5/8"X12	57	15.5	44	50	
2J9-20-24	U1.5/8"X12	U1.7/8"X12	57	18.5	48	55	
2J9-24-20	U1.7/8"X12	U1.5/8"X12	57	15.5	48	50	
2J9-24	U1.7/8"X12	U1.7/8"X12	57	18.5	48	55	
2J9-32	U2.1/2"X12	U2.1/2"X12	66	24.5	65	75	

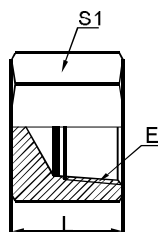
Hydraulic adapters



7N9

90°美制布锥管内螺纹
90°NPT FEMALE

代号 PART NO.	螺纹 THREADE		尺 寸 DIMENSIONS					
	E	F	A	S1				
7N9-02	Z1/8"X27	Z1/8"X27		17		14		
7N9-02-04	Z1/8"X27	Z1/4"X18		21		17		
7N9-04	Z1/4"X18	Z1/4"X18		21		17		
7N9-06	Z3/8"X18	Z3/8"X18		24		22		
7N9-08	Z1/2"X14	Z1/2"X14		27		26		
7N9-12	Z3/4"X14	Z3/4"X14		33		34		
7N9-16	Z1"X11.5	Z1"X11.5		38		41		
7N9-20	Z1.1/4"X11.5	Z1.1/4"X11.5		45		54		
7N9-24	Z1.1/2"X11.5	Z1.1/2"X11.5		47		56		
7N9-32	Z2"X11.5	Z2"X11.5		60		68		

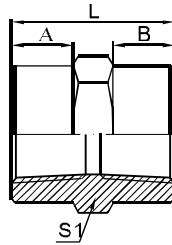


9N-CAP

美制布锥管内螺纹堵头
NPT FEMALE PLUG

代号 PART NO.	螺纹 THREADE		尺 寸 DIMENSIONS					
	E		A	S1				
9N-02CAP	Z1/8"X27		17.5	17				
9N-04CAP	Z1/4"X18		23	19				
9N-06CAP	Z3/8"X18		24	24				
9N-08CAP	Z1/2"X14		28	30				
9N-12CAP	Z3/4"X14		28	36				
9N-16CAP	Z1"X11.5		34	46				
9N-20CAP	Z1.1/4"X11.5		37	55				
9N-24CAP	Z1.1/2"X11.5		37	65				
9N-32CAP	Z2"X11.5		40.5	75				

Hydraulic adapters

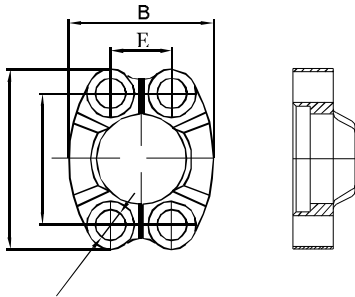


7N

美制布锥管内螺纹
NPT FEMALE

代号 PART NO.	螺纹 THREADE		尺寸 DIMENSIONS						
	E	F				A	B	SI	L
7N-02	Z1/8"X27	Z1/8"X27				8	8	14	22
7N-04-02	Z1/4"X18	Z1/8"X27				10	8	19	26
7N-04	Z1/4"X18	Z1/4"X18				10	10	19	28
7N-06-04	Z3/8"X18	Z1/4"X18				10	8	19	26
7N-06	Z3/8"X18	Z3/8"X18				11	11	19	28
7N-08-04	Z1/2"X14	Z1/4"X18				14	10	27	34
7N-08	Z1/2"X14	Z1/2"X14				14	14	27	38
7N-12	Z3/4"X14	Z3/4"X14				15.5	15.5	36	42
7N-16	Z1"X11.5	Z1"X11.5				17	17	41	50
7N-20	Z1.1/4"X11.5	Z1.1/4"X11.5				19	19	50	55
7N-24	Z1.1/2"X11.5	Z1.1/2"X11.5				19	19	55	55
7N-32	Z2"X11.5	Z2"X11.5				21	21	70	60

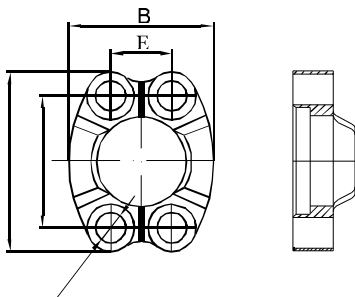
Hydraulic adapters



FL

轻系列对开法兰夹
L-SERIES SPLIT FLANGE CLAMPS

代号 PART NO.	法兰型号 FLANGE SIZE	螺栓 BOL	尺寸 DIMENSIONS				
			A	B	C	D	E
FL-08	1/2"	M8x25	54	46	38.1	9	17.5
FL-12	3/4"	M10x30	65.1	52	47.6	11	22.2
FL-16	1"	M10x30	69.8	59	52.4	11	26.2
FL-20	1.1/4"	M10x30	79.4	73	58.7	11	30.2
FL-24	1.1/2"	M12x35	93.7	83	69.8	13.5	35.7
FL-32	2"	M12x35	101.6	97	77.8	13.5	42.9
FL-40	2.1/4"	M12x40	114	108	89	13.5	50.8
FL-48	3"	M16x50	135	130.6	106.4	16.7	62

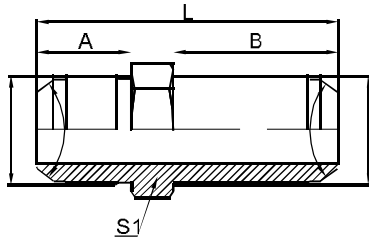


FS

重系列对开法兰夹
S-SERIES SPLIT FLANGE CLAMPS

代号 PART NO.	法兰型号 FLANGE SIZE	螺栓 BOL	尺寸 DIMENSIONS				
			A	B	C	D	E
FS-08	1/2"	M8x30	56.3	47	40.5	9	18.2
FS-12	3/4"	M10x35	71.4	60	50.8	11	23.8
FS-16	1"	M12x45	80.9	70	57.1	13	27.8
FS-20	1.1/4"	M14x30	95.2	77	66.7	15	31.8
FS-24	1.1/2"	M16x55	112.7	95	79.5	17	36.5
FS-32	2"	M20x70	133.3	114	96.8	21	44.5

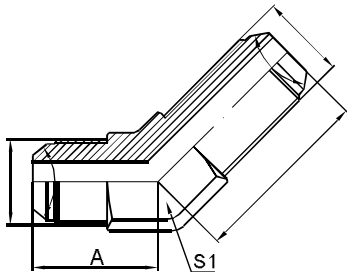
Hydraulic adapters



6J

美制JIC外螺纹74°外锥过板接头
JIC MALE 74° CONE BULKHEAD

代号 PART NO.	螺纹 THREADE				尺寸 DIMENSIONS				
	E				A	B	S1	L	
6J-04	U7/16"X20				14	32.5	17	53	
6J-06	U9/16"X18				14	32.5	22	54	
6J-08	U3/4"X16				16.7	36.5	24	61.5	
6J-10	U7/8"X14				19.5	40	30	69.5	
6J-12	U1.1/16"X12				22	44.5	36	78	
6J-16	U1.5/16"X12				23	44.5	41	80	
6J-20	U1.5/8"X12				24.5	45.7	50	84	
6J-24	U1.7/8"X12				27.5	46	55	89	
6J-32	U2.1/2"X12				34	53.1	70	105	

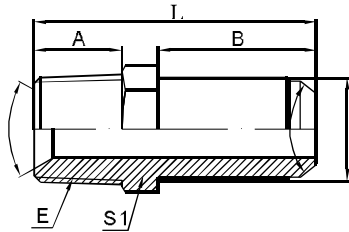


6J4

45°美制JIC外螺纹74°外锥过板接头
45° JIC MALE 74° CONE BULKHEAD

代号 PART NO.	螺纹 THREADE				尺寸 DIMENSIONS				
	E				A	B	S1		
6J4-04	U7/16"X20				22	39	14		
6J4-06	U9/16"X18				22	42.5	14		
6J4-08	U3/4"X16				25	49.3	19		
6J4-10	U7/8"X14				27	55	22		
6J4-12	U1.1/16"X12				33	62	27		
6J4-16	U1.5/16"X12				37	65	33		
6J4-20	U1.5/8"X12				40	67.3	44		

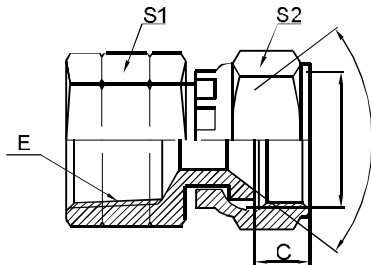
Hydraulic adapters



6NJ

美制NPT外螺纹/美制JIC外螺纹外锥过板接头
NPT MALE/JIC MALE 74° CONE
BULKHEAD

代号 PART NO.	螺纹 THREADE		尺寸 DIMENSIONS				
	E	F	A	B	S1	L	
6NJ-02-04	Z1/8"X27	U7/16"X20	10	32.5	14	48.5	
6NJ-04	Z1/4"X18	U7/16"X20	14	32.5	14	52.5	
6NJ-04-06	Z1/4"X18	U9/16"X18	14	32.5	17	52.5	
6NJ-06	Z3/8"X18	U9/16"X18	14	32.5	17	52.5	
6NJ-08	Z1/2"X14	U3/4"X16	19	36.5	22	64	
6NJ-08-10	Z1/2"X14	U7/8"X14	19	40	22	67	
6NJ-12	Z3/4"X14	U1.1/16"X12	19.5	44.5	27	73	
6NJ-16	Z1"X11.5	U1.5/16"X12	24	44.5	36	79.5	
6NJ-20	Z1.1/4"X11.5	U1.5/8"X12	25	45.7	46	84	
6NJ-24	Z1.1/2"X11.5	U1.7/8"X12	25	46	50	88	

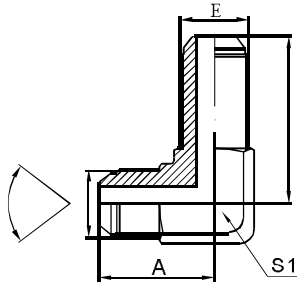


7NJ

布锥管内螺纹/JIC内螺纹74°内锥
NPT FEMALE/JIC FEMALE 74° SEAT

代号 PART NO.	螺纹 THREADE		尺寸 DIMENSIONS			
	E	F	C	S1	S2	
7NJ-04	Z1/4"X18	U7/16"X20	8.5	19	17	
7NJ-04-06	Z1/4"X18	U9/16"X18	10	19	19	
7NJ-06	Z3/8"X18	U9/16"X18	10	24	19	
7NJ-06-08	Z3/8"X18	U3/4"X16	11	24	24	
7NJ-08	Z1/2"X14	U3/4"X16	11	30	24	
7NJ-08-10	Z1/2"X14	U7/8"X14	11	30	27	
7NJ-08-12	Z1/2"X14	U1.1/16"X12	13.5	30	32	
7NJ-12	Z3/4"X14	U1.1/16"X12	13.5	36	32	
7NJ-16	Z1"X11.5	U1.5/16"X12	14.5	41	41	
7NJ-20	Z1.1/4"X11.5	U1.5/8"X12	15.5	50	50	
7NJ-24	Z1.1/2"X11.5	U1.7/8"X12	18.5	60	55	

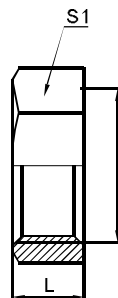
Hydraulic adapters



6J9

90°美制JIC外螺纹74°外锥过板接头
90°JIC MALE 74°CONE BULKHEAD

代号 PART NO.	螺纹 THREADE				尺寸 DIMENSIONS				
	E				A	B	S1		
6J9-04	U7/16"X20				29	40.4	14		
6J9-06	U9/16"X18				29	46	14		
6J9-08	U3/4"X16				33	53.5	19		
6J9-10	U7/8"X14				37	60.7	22		
6J9-12	U1.1/16"X12				40	67.8	27		
6J9-16	U1.5/16"X12				49	71	33		
6J9-20	U1.5/8"X12				57	79.2	44		

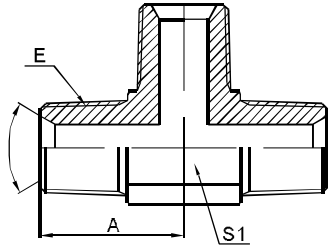


8J

美制JIC锁母
JIC LOCK NUT

代号 PART NO.	螺纹 THREADE				尺寸 DIMENSIONS				
	E				L		S1		
8J-04	U7/16"X20				7		17		
8J-06	U9/16"X18				7		19		
8J-08	U3/4"X16				8		24		
8J-10	U7/8"X14				9		30		
8J-12	U1.1/16"X12				10.5		36		
8J-16	U1.5/16"X12				10.5		41		
8J-20	U1.5/8"X12				10.5		50		
8J-24	U1.7/8"X12				10.5		55		
8J-32	U2.1/2"X12				10.5		70		

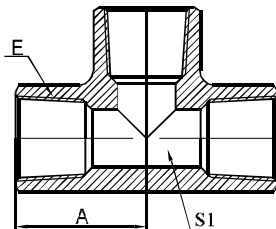
Hydraulic adapters



AN

美制布锥管外螺纹三通
NPT MALE TEE

代号 PART NO.	螺纹 THREADE				尺寸 DIMENSIONS			
	E				A	S1		
AN-02	Z1/8"X27				24	11		
AN-04	Z1/4"X18				27	14		
AN-06	Z3/8"X18				28	17		
AN-08	Z1/2"X14				33	22		
AN-12	Z3/4"X14				40	27		
AN-16	Z1"X11.5				49	33		
AN-20	Z1.1/4"X11.5				57	44		

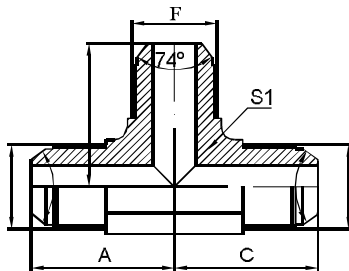


GN

布锥管内螺纹三通
NPT FEMALE TEE

代号 PART NO.	螺纹 THREADE				尺寸 DIMENSIONS			
	E				A	S1		
GN-02	Z1/8"X27				17	14		
GN-04	Z1/4"X18				21	17		
GN-06	Z3/8"X18				24	22		
GN-08	Z1/2"X14				27	26		
GN-12	Z3/4"X14				33	34		
GN-16	Z1"X11.5				38	41		
GN-20	Z1.1/4"X11.5				45	54		
GN-24	Z1.1/2"X11.5				47	56		
GN-32	Z2"X11.5				60	68		

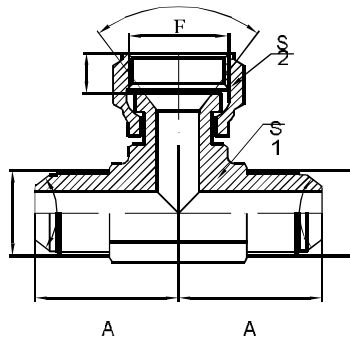
Hydraulic adapters



AJ

美制JIC外螺纹74°外锥三通
JIC MALE 74° CONE TEE

代号 PART NO.	螺纹 THREADE			尺寸 DIMENSIONS				
	E	THREADE	G	A	B	C	S1	
AJ-04	U7/16"X20	U7/16"X20	U7/16"X20	24	24	24	11	
AJ-04-06-04	U7/16"X20	U9/16"X18	U7/16"X20	27	27	27	14	
AJ-05	U1/2"X20	U1/2"X20	U1/2"X20	27	27	27	14	
AJ-06-04-06	U9/16"X18	U7/16"X20	U9/16"X18	27	27	27	14	
AJ-06	U9/16"X18	U9/16"X18	U9/16"X18	27	27	27	14	
AJ-08	U3/4"X16	U3/4"X16	U3/4"X16	30	30	30	19	
AJ-08-06-08	U3/4"X16	U9/16"X18	U3/4"X16	30	30	30	19	
AJ-10	U7/8"X14	U7/8"X14	U7/8"X14	33	33	33	22	
AJ-12	U1.1/16"X12	U1.1/16"X12	U1.1/16"X12	40	40	40	27	
AJ-16	U1.5/16"X12	U1.5/16"X12	U1.5/16"X12	49	49	49	33	
AJ-16-12-16	U1.5/16"X12	U1.1/16"X12	U1.5/16"X12	49	49	49	33	
AJ-20	U1.5/8"X12	U1.5/8"X12	U1.5/8"X12	57	57	57	44	

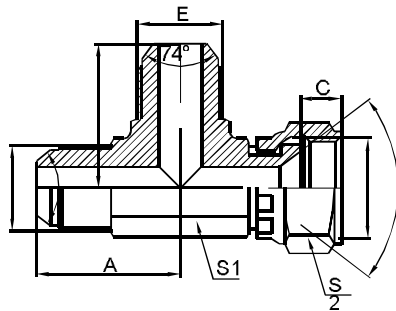


BJ

美制JIC外螺纹74°外锥/ 美制JIC
内螺纹74°内锥分支三通 JIC
MALE 74° CONE/
JIC FEMALE BRANCH TEE

代号 PART NO.	螺纹 THREADE		尺寸 DIMENSIONS				
	E	F	A	C	S1	S2	
BJ-04	U7/16"X20	U7/16"X20	24	8.5	11	17	
BJ-05	U1/2"X20	U1/2"X20	27	9.5	14	19	
BJ-06	U9/16"X18	U9/16"X18	27	10	14	19	
BJ-08	U3/4"X16	U3/4"X16	30	11	19	24	
BJ-10	U7/8"X14	U7/8"X14	33	11	22	27	
BJ-12	U1.1/16"X12	U1.1/16"X12	40	13.5	27	32	
BJ-16	U1.5/16"X12	U1.5/16"X12	49	14.5	33	41	
BJ-20	U1.5/8"X12	U1.5/8"X12	57	15.5	44	50	

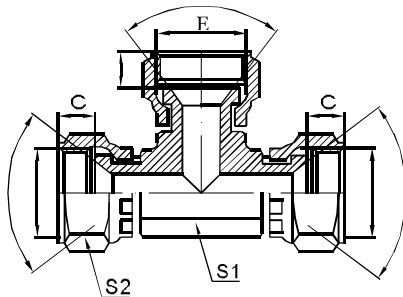
Hydraulic adapters



CJ

美制JIC外螺纹74°外锥/
美制JIC内螺纹74°内锥主支三通
JIC MALE 74° CONE/
JIC FEMALE 74° SEAT RUN TEE

代号 PART NO.	螺纹 THREADE		尺寸 DIMENSIONS				
	E	F	A	C	S1	S2	
CJ-04	U7/16"X20	U7/16"X20	24	8.5	11	17	
CJ-05	U1/2"X20	U1/2"X20	27	9.5	14	19	
CJ-06	U9/16"X18	U9/16"X18	27	10	14	19	
CJ-08	U3/4"X16	U3/4"X16	30	11	19	24	
CJ-10	U7/8"X14	U7/8"X14	33	11	22	27	
CJ-12	U1.1/16"X12	U1.1/16"X12	40	13.5	27	32	
CJ-16	U1.5/16"X12	U1.5/16"X12	49	14.5	33	41	
CJ-20	U1.5/8"X12	U1.5/8"X12	57	15.5	44	50	



DJ

美制JIC内螺纹74°内锥三通
JIC FEMALE 74° SEAT TEE

代号 PART NO.	螺纹 THREADE		尺寸 DIMENSIONS			
	E	F	C	S1	S2	
DJ-04	U7/16"X20	U7/16"X20	8.5	11	17	
DJ-05	U1/2"X20	U1/2"X20	9.5	11	19	
DJ-06	U9/16"X18	U9/16"X18	10	14	19	
DJ-08	U3/4"X16	U3/4"X16	11	19	24	
DJ-10	U7/8"X14	U7/8"X14	11	22	27	
DJ-12	U1.1/16"X12	U1.1/16"X12	13.5	27	32	
DJ-16	U1.5/16"X12	U1.5/16"X12	14.5	33	41	
DJ-20	U1.5/8"X12	U1.5/8"X12	15.5	44	50	