

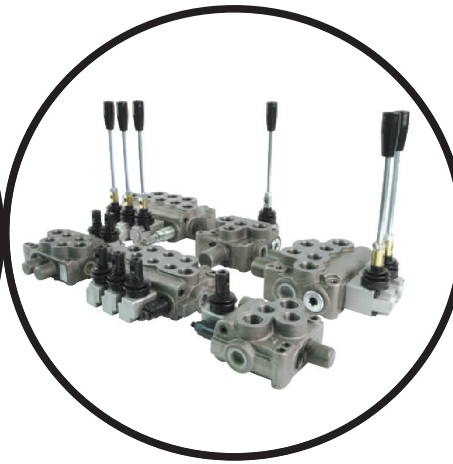
HYDRAULIC COMPONENTS



www.hofhydraulic.com



Hydraulic Pumps
Hydraulic Motors
Cartridge Kits



Directional Control
Valves

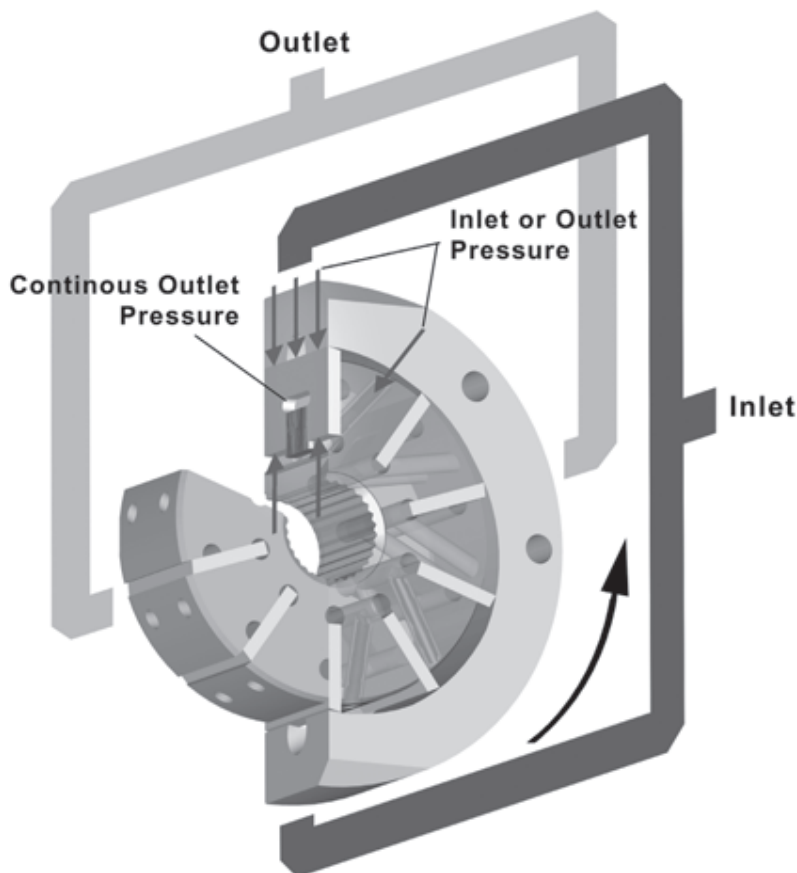


Accessories
and MORE

Contents

Description	Page
Fixed Displacement Vane Pump HV10 and HV20	1
Fixed Displacement Vane Pump HV and HVQ	14
High Pressure Single Vane Pump HT6, HT7	35
High Pressure Single Vane Pump HT6GC (Truck Pump)	48
High Pressure Double Vane Pump HT6, HT7, HT67	51
High Pressure Double Vane Pump HT6GCC	71
High Pressure Double Vane Pump HT6CCZ	74
Power Steering Vane Pump HVTM42	77
High Torque Vane Motor HM2-210	83
High Torque Vane Motor 25HM, 35HM, 45HM	87
Cartridge Kits HV and HVQ Series	95
Cartridge Kits HM Series	106
Cartridge Kits HM2 Series	109
Cartridge Kits HT Series	110
Cartridge Kits HSQP series (Tokimec)	116
Solenoid Operated Directional Valve HWE	119
Pilot Operated Relief Valve RB	122
Remote Control Relief Valve RM	126
Compact Monoblock Directional Control Valve MB20	127
Monoblock Directional Control Valve MCD20/MCD50/MCD100/3	130
Sectional Directional Control Valve MCD6	136
Sectional Directional Control Valve MCD10/MCD25	140
Prefill Valve AD	145
Flow Control Valve CF	147
Check Valve CNT	148
Pressure Switch P-02	150
Suction Filter HF	151
Drive Coupling HC	152
Filler Breather Filter HB55-72	153
Level and Temperature Gauge HL-127	154

Intra Vane Design



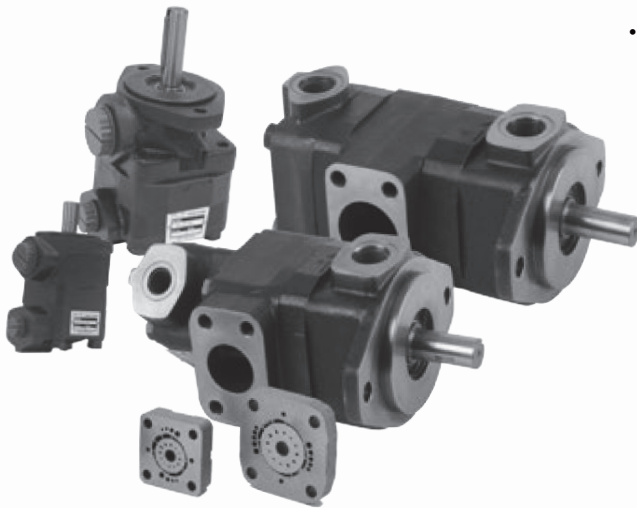
Fixed Displacement Vane Pump

HV10 and HV20 Series



Features

- HV10 / HV20 Series are fixed displacement and balanced type vane pumps. With compact sizes, they are available in single pumps and double pumps for both industrial and mobile application.
- The vane design with self compensation for wear and clearances makes volumetric efficiency of pump nearly constant over the service life. (the vanes always adjust its orbit to contact with the cam ring, even though wear occurs between the cam ring and vane tips)
- The vane pump is not damaged at low speed and high pressure operation because pumping action does not start until the speed is high enough for the vane to throw out. With hydraulically balanced design, the bearing is externally loaded only. Therefore, the pump requires minimized maintenance with long service life.
- The inlet or outlet ports can be rotated through increments of 90° in relation to each other, providing application flexibility and easy installation.
- With optional flow control and priority valve covers, the pump can be used in more applications. The flow control cover can limit the flow to the primary circuit at the required flow rate, while diverts remaining flow to the tank. The priority valve cover maintains a constant flow to the primary circuit, while diverts remaining flow to the secondary circuit. Each cover comes with a relief valve to limits the maximum pressure of the primary circuit.

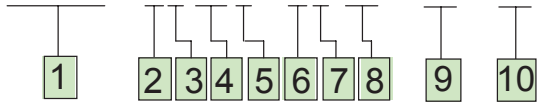


Handling

- For maximum service life, the pump should be protected from contamination. Filtering fluid before filling and during operation to maintain or exceed ISO cleanliness code 17/14. Replaceable elements should be changed as filter supplier instructions
- The drive shaft must align with the power source shaft. Avoiding shaft end thrust and applications that impose radial loading.
- The start-up procedures should be as follows:
 - Check the rotation of power source to match the rotation of pump.
 - Check inlet and outlet ports to assure all connections are properly installed and check all mounting bolts and flanges to assure all are tight and properly aligned.
 - Fill pump with fluid through the outlet port if the pump is mounted above the fluid level. The spline shaft models also need to be lubricated with an anti-fretting grease or similar lubricant.
 - Place all controls in the neutral position so the pump is unloaded during initial start-up.
 - Prime the pump within a few second when the pump is started.
 - Bleed off entrapped air from outlet circuit until a steady output flow is observed.

The products described herein, including without limitation, product features, specifications, designs, availability and pricing, are subject to change at any time without notice.

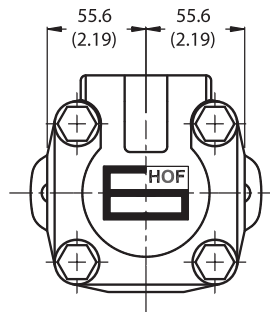
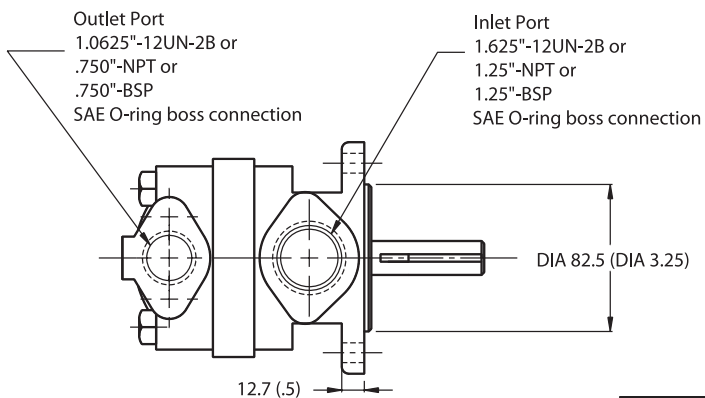
HV20F - 1P11S - 1C (8) - (H) - (L)



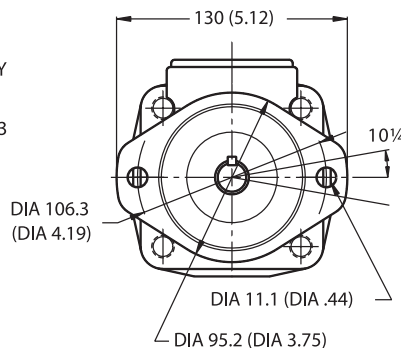
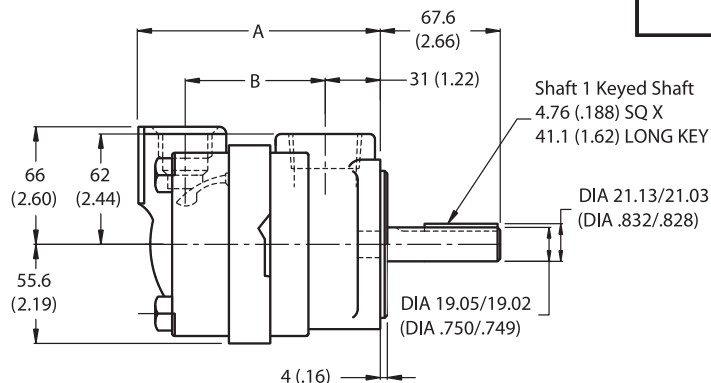
- 1 Model Series**
Standard Cover - HV10, HV20
Flow Control Cover(F) - HV10F, HV20F
Priority Valve Cover(P) - HV10P, HV20P
- 2 Mounting**
1 - 2 - Bolt Flange
- 3 Inlet Port Connection**
S - 1.3125"-12 Str.thd. (HV10)
- 1.625"-12 Str.thd. (HV20)
P - 1.00" NPT (HV10)
- 1.25" NPT (HV20)
B - 1.00" BSP (HV10)
- 1.25" BSP (HV20)
- 4 Delivery (USgpm at 1200 rpm)**
HV10 - 1, 2, 3, 4, 5, 6, 7
HV20 - 5, 6, 7, 8, 9, 10, 11, 12, 13
- 5 Outlet Port Connection**
HV10 and HV20
S - 0.750"-16 Str.thd. (HV10)
- 1.0625"-12 Str.thd. (HV20)
P - 0.500" NPT (HV10)
- 0.750" NPT (HV20)
B - 0.500" BSP (HV10)
- 0.750" BSP (HV20)
HV10F, HV10P, HV20F and HV20P
S - 0.750"-16 Str.thd. for outlet and 1.0625"-12 Str. thd. For tank port (HV20F)
P - 0.750"-16 Str.thd. for outlet and 0.500" NPT for tank port (HV10F and HV20F)
T - 0.750"-16 Str.thd. for outlet and tank port (HV10F)
- 0.750"-16 Str.thd. for primary outlet and tank port 0.875"-14 Str.thd.for secondary outlet (HV20P)
K - 0.5625"-18 Str.thd. for primary outlet and tank port and 0.750"-16 Str.thd.for secondary outlet (HV10P)
T - 0.750"-16 Str.thd. for outlet 0.750"-16 Str.thd. for tank port (HV20F)
- 6 Shaft**
1 - Straight keyed
3 - Threaded with woodruff key
6 - Woodruff key stub (HV20 only)
11 - Splined
12 - Splined (HV10 only)
15 - Splined (HV20 only)
38 - Splined
123 - Threaded with woodruff Key (HV20 only)
- 7 Outlet Port Position**
(Viewed from cover end)
A - Opposite inlet
B - 90° CCW from inlet
C - Inline with inlet
D - 90° CW from inlet
- 8 Flow rate Setting for Flow control and Priority Valve Cover L/min (USgpm)**
2 - 7.6 (2) 6 - 22.7 (6)
3 - 11.4 (3) 7 - 26.5 (7)
4 - 15.2 (4) 8 - 30.3 (8)
5 - 19.0 (5)
- 9 Pressure Setting for Flow control and Priority Valve Cover bar (psi)**
A - 17 (250) F - 103 (1500)
B - 34 (500) G - 121 (1750)
C - 52 (750) H - 138 (2000)
D - 69 (1000) J - 155 (2200)
E - 86 (1250) K - 172 (2500)
- 10 Shaft Rotation**
(Viewed from shaft end)
R - Turn right
L - Turn left

Model Series	Ring Size Delivery at 1200 r/min & 7 bar (100 psi) USgpm	Geometric Displacement cm ³ /r (in ³ /r)	Delivery at 1500 r/min & 7 bar (100 psi) L/min (USgpm)	Maximum Pressure bar (psi)	Maximum Speed rpm	Minimum Speed rpm	Weight kg (lb)
HV10 HV10F HV10P	1	3.3 (0.20)	4.70 (1.25)	172 (2500)	4800	650	4.5 - 6.8 (10 - 15)
	2	6.6 (0.40)	9.40 (2.50)	172 (2500)	4500	650	
	3	9.8 (0.60)	14.20 (3.75)	172 (2500)	4000	650	
	4	13.1 (0.80)	18.90 (5.00)	172 (2500)	3400	650	
	5	16.4 (1.00)	23.60 (6.25)	172 (2500)	3200	650	
	6	19.5 (1.19)	28.40 (7.50)	152 (2200)	3000	650	
	7	22.8 (1.39)	33.10 (8.75)	138 (2000)	2800	650	
HV20 HV20F HV20P	5	16.4 (1.00)	23.60 (6.25)	172 (2500)	3400	650	7.3 - 8.2 (16 - 18)
	6	19.5 (1.19)	28.39 (7.50)	172 (2500)	3400	650	
	7	22.8 (1.39)	33.11 (8.75)	172 (2500)	3000	650	
	8	26.5 (1.62)	37.85 (10.00)	172 (2500)	2800	650	
	9	29.7 (1.81)	42.57 (11.25)	172 (2500)	2800	650	
	10	34.1 (2.08)	47.30 (12.51)	172 (2500)	2500	650	
	11	36.4 (2.22)	52.04 (13.75)	172 (2500)	2500	650	
	12	39.0 (2.38)	56.77 (15.00)	152 (2200)	2400	650	
	13	42.4 (2.59)	61.50 (16.25)	152 (2200)	2400	650	

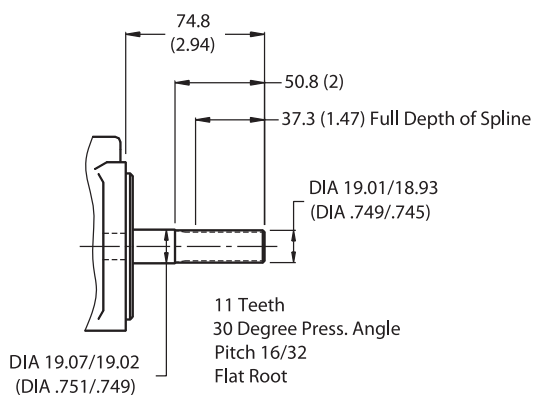
HV20



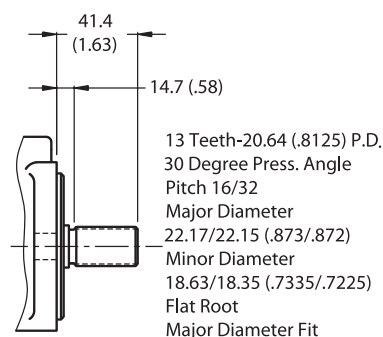
Delivery @ 1200 rpm & 7 bar (100 psi)	Dimension	
	A	B
5, 6	125.2 (4.93)	71.1 (2.80)
7, 8, 9	131.6 (5.18)	77.5 (3.05)
10, 11	136.7 (5.38)	82.6 (3.25)
12, 13	140.2 (5.52)	86.1 (3.39)



Other shaft options for HV20 Series



Shaft 11 Splined Shaft 11 Teeth



Shaft 15 Splined Shaft 13 Teeth